

## CAUTG ENROLMENT REPORT 2007-2008

**1. COLLECTION OF DATA:** On April 2, 2008, the CAUTG Enrolment Questionnaire was posted on the web at <http://www.ucs.mun.ca/~marcella/CAUTG/questionnaire2008.html> and a message was sent to the CAUTG listserv asking the designated individual in each department to fax the completed form to the Enrolment Surveyor by April 18. E-mails and faxes were sent to universities and colleges that had not responded by that date. All 44 universities replied, for a 100% response rate four years in a row! Information was also received from 6 colleges.

**2. RESULTS AND COMPARISONS:** Attached are 19 Tables reflecting the results of this year's survey (Table 4) and comparisons based on data from the history file.

**Table 1: 18-Year Report of German Enrolments 1990-2008 for 44 Universities with Gains and Loss Comparison for 2006-2007 and 2007-2008.** This is the comprehensive report for 44 universities, with data missing. The last four columns are totalled, since we have complete data for those four years. Enrolments for the last two years are compared. **In 2007-2008, 11 universities show a combined gain of 303 over the previous year, while 32 universities show a combined loss of 1723, and one remains the same, for a net loss of 1420 students.**

**Table 2: Total German Enrolments for 25 Universities That Have Reported Every Year for 18 Years.** This is the only category for which we have complete data going back to 1990. **Enrolments at these 25 universities are down this year by 1,042 students.**

**Table 3: Ranking of 2006-2007 German Enrolments for 41 Universities.** This table represents the ranking for the previous year, 2006-2007, since the university enrolment figures for 2007-2008 are not yet available. German enrolments are ranked twice: 1) by actual size, and 2) by market share.

**Table 4: 2007-2008 Enrolment Survey with 44 Universities Reporting.** The total German enrolment for this year reported by 44 universities is 19,750. Table 4 shows the enrolment distribution spread over nine categories: 1 Language, 2 Reading, 3 Business German, 4 Culture/German Studies, 5 Culture/German Studies in Translation, 6 Literature, 7 Literature in Translation, 8 Linguistics and 9 Other. This year's survey results have been added to the database for the comparisons below.

**Tables 5 - 10** show the enrolment distribution for Language, Reading, Culture/German Studies, Culture/German Studies in Translation, Literature, and Literature in Translation for the **sixteen-year period 1992-2008**. While distribution figures were in the history file for the year 1990-91, only the total enrolment was available for 1991-92. The tables begin therefore with 1992-93.

26 universities are included in this **sixteen-year study**. Ottawa and York, who could not be used in Table 2 above because of missing data, have been included in Tables 5-10. Simon Fraser, included in Table 2, has been omitted here, since the breakdown for one year (1995-96) was not in the history file. Departments are invited to fill in any data missing from the tables.

**Table 5: Total Enrolment in Language Courses.** There were 10,486 registrations in language courses, compared to 11,209 last year, **for a decrease of 723 registrations.**

**Tables 5a, 5b, 5c, & 5d** show the distribution of enrolment in language courses. The previous labels Beginner, Intermediate 1, Intermediate 2, and Advanced were replaced in 2000-2001 for clarity with 1<sup>st</sup> year, 2<sup>nd</sup> year, 3<sup>rd</sup> year and 4<sup>th</sup> year. There were decreases at all levels.

**Table 6: Total Enrolment in Reading Courses.** There were 527 registrations in reading courses, compared to 648 last year, **for a decrease of 121 registrations.**

**Table 7: Total Enrolment in Culture/German Studies.** There were 267 registrations in Culture Studies taught in German, compared to 176 last year, **for an increase of 91 registrations.** Some figures on this table have been corrected for past years, since several departments were reporting culture courses taught in translation here.

**Table 8: Total Enrolment in Culture/German Studies in Translation.** There were 2068 registrations in Culture Studies taught in Translation, compared to 2,250 last year, **for a decrease of 182 registrations.** Some figures on this table for past years have been corrected. Several departments had avoided this category, thinking it related to courses that teach translation. Instead, it relates to courses with the same subject matter as category 7, but the materials and lectures are not in German.

**Table 9: Total Enrolment in Literature.** There were 424 registrations in Literature this year, compared to 673 last year, **for a decrease of 249.**

**Table 10: Total Enrolment in Literature in Translation.** There were 967 registrations in Literature in Translation this year, compared to 914 last year, **for an increase of 53.**

**Table 11: Colleges.** We received answers from 6 colleges.

**Table 12: Graduate Enrolments and Degrees Awarded.** 11 universities reported graduate enrolments this year. In 2007-2008 there were 72 M.A. students and 64 Ph.D. students, for a total of 136 graduate students, compared to 130 the previous year. The M.A.s decreased by 6 and the Ph.D.s increased by 12, **for an overall increase in graduate enrolments of six.**

32 M.A.s and 1 Ph.D. were awarded, compared to 27 and 5 last year, **for an increase in graduate degrees awarded of 1.**

**Table 13: Film Courses.** In 2007-2008 film courses were offered at 15 universities, with a total enrolment of 700, compared to 2006-2007, when film courses were offered at 15 universities with a total enrolment of 944, **for a decrease in film course enrolments of 244.**

**Table 14: Average Class Size - 1<sup>st</sup>-year Language for 45 Universities.** The class enrolments in first-year language ranged from 10 to 46, with a median of 23 and a mean of 23. There were two universities with a first-year class average of 40 or more. St. F.X. offered one section of introductory German in the fall with an enrolment of 42 and the continuation in winter with an enrolment of 37, for an average of 40. Guelph offers only one large section of Intro German I in

fall with a cap of 120, which they so far have not reached. Classes meet twice a week in the large class (prof. taught) and twice a week in seminars capped at 15 (PAD taught). Their total first-year enrolment in fall and winter terms this year, including Intro German I and II, was 185 in four sections, resulting in a first-year average of 46.25.

This table reports the first-year class average including both first and second semesters. A request has been made that we generate an additional table in which we report the class average for first-semester beginning level only. It is believed that our class sizes are larger at this level. A call will go out shortly to request this information.

**Table 15: Undergraduate Program Enrolments for 31 Universities.** The information is incomplete. Some departments are not able to track minors. At the 31 universities reporting, there were 143 undergraduate degrees awarded, for an increase of 25 undergraduate degrees awarded at the same 31 universities in 2006-2007.

**Table 16: Comparison of Enrolments in Language, Reading, Culture Taught in German (Kultur), Culture Taught in Translation (Culture), Literature Taught in German (Literatur), and Literature Taught in Translation (Literature) Courses from 1992-2008.** This table presents the totals from all six categories for 16 years, with graphic depiction.

**Table 17: Comparison of Enrolments in Language, Reading, Culture Taught in German (Kultur), Culture Taught in Translation (Culture), Literature Taught in German (Literatur), and Literature Taught in Translation (Literature) Courses in 2007-2008.** This table compares the totals of the six categories for this year, with graphic depiction.

**Table 18: Normal Annual Full Teaching Load for Tenured /Tenure Stream Faculty for 34 Universities.** Nine universities reported 4 courses, eighteen reported 5 courses, and seven reported 6 courses as the normal full load, for an average normal full load of 4.9.

**Table 19. Faculty Complement and Number of Courses Taught by Tenured / Tenure Stream, Full-time Contractuals and Other Full-time Appointments, and Sessionals or Other Part-timers and Graduate Students at 36 Universities.** 56% of the courses were taught by full-time faculty including tenured / tenure stream, full-time contractuals and other full-time appointments. 44% were taught by part-timers including graduate students. 36% of the courses were taught by tenured / tenure stream faculty.

**3. SUMMARY.** Of 44 universities reporting in both 2006-2007 and 2007-2008, 11 universities show a combined gain of 303 over the previous year, 32 show a combined loss of 1723, and one remains the same, **for a net loss of 1420 students (Table 1)**. There are gains in culture studies taught in German, literature in translation, undergraduate degrees awarded, graduate enrolments, and graduate degrees awarded.

Factors contributing to decreased enrolment included sabbaticals and other leaves, reduced course offerings due to major/minor being terminated, in one case even though enrolments had increased and additional faculty had been requested, courses being cancelled due to enforcement of a minimum enrolment (in one case 15 for second year language), reduced number of sections for first-year German with higher caps per section but resulting in lower

enrolments, additional options for students to complete the language requirement, and general lower enrolment at the various universities.

Every attempt has been made to supply an accurate report. Please check your own institution's figures for accuracy. This report reflects data received by Tuesday, May 27, 2008.

This also represents my final annual report. There were nine reports before my first one, and this is my ninth. Many, many thanks to all of you who have tolerated numerous emails and faxes in my quest for accurate information. You may have to indulge a few more, as I tidy up several final points before turning this task over to my successor in January 2009.

Respectfully submitted,  
Marcella Rollmann  
Enrolment Surveyor  
27 May 2008, revised 3 July 2008  
[marcella@mun.ca](mailto:marcella@mun.ca)

Table 1

**18-Year Report of German Enrolments 1990-2008 for 44 Universities with Gain and Loss  
Comparison for 2006-2007 and 2007-2008**

University	90-91	91-92	92-93	93-94	94-95	95-96	96-97	97-98	98-99	99-00	00-01	01-02	02-03	03-04	04-05	05-06	06-07	07-08	Gain/ Loss	
	1 Acadia	428	n.d.	n.d.	n.d.	460	469	496	485	300	323	368	359	438	482	467	425	<b>399</b>	<b>292</b>	-107
2 Alberta	1054	1127	1344	1432	1153	1188	1001	1063	991	984	738	741	803	790	816	785	<b>838</b>	<b>826</b>	-12	
3 Athabasca	n.d.	n.d.	n.d.	n.d.	n.d.	n.d.	n.d.	n.d.	n.d.	n.d.	160	n.d.	97	116	99	110	<b>125</b>	<b>100</b>	-25	
4 Augustana	n.d.	n.d.	n.d.	n.d.	289	215	123	128	n.d.	241	176	165	165	121	116	304	<b>244</b>	<b>205</b>	-39	
5 Bishop's	n.d.	n.d.	n.d.	n.d.	383	300	n.d.	n.d.	n.d.	n.d.	187	216	198	147	221	158	<b>140</b>	<b>95</b>	-45	
6 Brandon	68	45	46	49	51	60	48	132	53	29	30	30	27	40	40	21	<b>0</b>	<b>35</b>	35	
7 UBC	1119	1352	1241	1263	1065	1156	1123	1215	1372	1623	1880	1454	1926	2239	1981	2415	<b>2420</b>	<b>2527</b>	107	
8 Brock	397	485	407	344	330	488	438	381	295	326	225	189	173	173	238	249	<b>260</b>	<b>225</b>	-35	
9 Calgary	983	817	924	810	769	751	743	514	573	512	520	423	474	551	490	552	<b>590</b>	<b>527</b>	-63	
10 Carleton	751	743	758	848	902	758	672	429	n.d.	n.d.	232	208	304	319	248	286	<b>278</b>	<b>289</b>	11	
11 Concordia	n.d.	n.d.	920	892	839	662	1075	584	n.d.	402	443	433	558	581	524	426	<b>437</b>	<b>393</b>	-44	
12 Dalhousie	839	1233	1295	1282	1332	1444	1439	1336	1399	987	897	935	1089	1226	871	809	<b>878</b>	<b>736</b>	-142	
13 Guelph	332	258	271	292	249	245	298	306	239	244	247	286	311	373	331	314	<b>281</b>	<b>286</b>	5	
14 Lakehead	40	30	88	34	70	41	26	46	38	32	64	60	28	28	28	32	<b>48</b>	<b>34</b>	-14	
15 Laurentian	72	101	86	113	64	91	80	50	n.d.	62	58	58	122	65	68	97	<b>72</b>	<b>90</b>	18	
16 Laval	629	735	599	656	535	411	358	301	413	466	362	509	579	768	803	774	<b>584</b>	<b>582</b>	-2	
17 Lethbridge	n.d.	n.d.	110	n.d.	98	133	n.d.	n.d.	n.d.	98	111	86	84	99	107	111	<b>103</b>	<b>111</b>	8	
18 Manitoba	540	482	n.d.	n.d.	n.d.	249	n.d.	152	n.d.	224	168	470	484	562	490	513	<b>433</b>	<b>404</b>	-29	
19 McGill	945	994	953	1016	1053	961	919	809	1062	963	912	972	993	819	947	741	<b>817</b>	<b>793</b>	-24	
20 McMaster	666	624	755	754	712	523	541	364	406	423	336	403	337	506	350	277	<b>252</b>	<b>282</b>	30	
21 Memorial	884	971	980	849	804	615	708	676	769	771	836	829	814	706	762	785	<b>741</b>	<b>564</b>	-177	
22 Montreal	1027	1108	1247	1409	1142	1035	1087	1004	883	1078	1016	1120	1160	1134	1286	1096	<b>1106</b>	<b>860</b>	-246	
23 Mt.Allison	156	214	300	353	338	383	327	278	236	270	222	300	255	237	200	223	<b>165</b>	<b>172</b>	7	
24 Mt.St.Vin.	34	51	n.d.	n.d.	15	n.d.	n.d.	n.d.	n.d.	n.d.	n.d.	42	34	36	26	23	<b>21</b>	<b>21</b>	0	
25 UNB	649	593	586	428	524	486	456	473	332	349	336	391	360	487	430	309	<b>291</b>	<b>317</b>	26	
26 Ottawa	n.d.	381	417	414	400	405	304	263	292	231	242	312	333	419	463	542	<b>518</b>	<b>572</b>	54	
27 PEI	n.d.	n.d.	n.d.	n.d.	n.d.	n.d.	n.d.	n.d.	n.d.	n.d.	n.d.	n.d.	n.d.	100	106	86	<b>74</b>	<b>39</b>	-35	
28 UQAM	266	217	n.d.	n.d.	221	373	366	n.d.	358	396	452	525	625	662	787	607	<b>607</b>	<b>586</b>	-21	
29 Queen's	761	1038	1018	882	774	724	711	720	622	641	602	538	655	723	721	691	<b>605</b>	<b>548</b>	-57	
30 Regina	421	450	537	506	445	429	420	399	311	362	432	429	375	317	296	280	<b>254</b>	<b>253</b>	-1	
31 St. F.X.	n.d.	n.d.	n.d.	n.d.	n.d.	n.d.	n.d.	n.d.	n.d.	n.d.	n.d.	n.d.	n.d.	n.d.	78	96	<b>114</b>	<b>107</b>	-7	
32 St.Mary's	122	170	98	195	237	229	180	179	241	224	231	206	189	271	294	228	<b>226</b>	<b>163</b>	-63	
33 Sask.	276	214	240	n.d.	208	234	145	n.d.	142	n.d.	172	206	216	229	206	191	<b>229</b>	<b>201</b>	-28	
34 Simon Fr.	235	197	92	165	131	143	144	113	127	89	132	274	605	555	380	405	<b>305</b>	<b>307</b>	2	
35 Toronto	1259	1410	1603	1842	1467	1393	1395	1572	1519	1779	1667	1664	1787	1885	1589	1795	<b>1950</b>	<b>1861</b>	-89	
36 Trent	455	358	354	n.d.	n.d.	243	259	214	183	280	298	245	245	298	230	416	<b>314</b>	<b>290</b>	-24	
37 Trinity W.	n.d.	n.d.	n.d.	n.d.	n.d.	n.d.	n.d.	n.d.	n.d.	n.d.	n.d.	n.d.	n.d.	n.d.	46	34	<b>40</b>	<b>29</b>	-11	
38 Victoria	806	743	1043	728	718	826	748	770	767	880	912	1048	990	1084	1202	963	<b>959</b>	<b>839</b>	-120	
39 Waterloo	1323	1449	1502	1422	1258	1221	994	908	863	949	811	935	777	745	1029	1051	<b>1285</b>	<b>1137</b>	-148	
40 W.Ontario	700	738	758	723	592	534	498	422	353	427	387	342	412	347	324	373	<b>368</b>	<b>361</b>	-7	
41 W.Laurier	369	384	396	302	361	322	341	382	419	393	233	277	370	449	360	304	<b>350</b>	<b>330</b>	-20	
42 Windsor	326	329	235	319	301	385	343	295	428	346	367	367	402	445	386	458	<b>551</b>	<b>517</b>	-34	
43 Winnipeg	198	217	n.d.	258	224	157	150	144	98	101	98	126	166	204	200	184	<b>200</b>	<b>175</b>	-25	
44 York	n.d.	403	567	562	546	598	567	629	605	592	506	538	513	551	544	671	<b>698</b>	<b>669</b>	-29	
<b>Total:</b>		<b>21180</b>	<b>21210</b>	<b>21170</b>	<b>19750</b>	<b>-1420</b>														

In 2007-2008, 11 universities show a combined gain of 303 over the previous year while 32 show a combined loss of 1723, and one remains the same, for a net loss of 1420 students.

Table 2

**Total German Enrolments for 25 Universities that have Reported Every Year for 18 Years**

University	90-91	91-92	92-93	93-94	94-95	95-96	96-97	97-98	98-99	99-00	00-01	01-02	02-03	03-04	04-05	05-06	06-07	07-08
1 Alberta	1054	1127	1344	1432	1153	1188	1001	1063	991	984	738	741	803	790	816	785	838	826
2 Brandon	68	45	46	49	51	60	48	132	53	29	30	30	27	40	40	21	0	35
3 UBC	1119	1352	1241	1263	1065	1156	1123	1215	1372	1623	1880	1454	1926	2239	1981	2415	2420	2527
4 Brock	397	485	407	344	330	488	438	381	295	326	225	189	173	173	238	249	260	225
5 Calgary	983	817	924	810	769	751	743	514	573	512	520	423	474	551	490	552	590	527
6 Dalhousie	839	1233	1295	1282	1332	1444	1439	1336	1399	987	897	935	1089	1226	871	809	878	736
7 Guelph	332	258	271	292	249	245	298	306	239	244	247	286	311	373	331	314	281	286
8 Lakehead	40	30	88	34	70	41	26	46	38	32	64	60	28	28	28	32	48	34
9 Laval	629	735	599	656	535	411	358	301	413	466	362	509	579	768	803	774	584	582
10 McGill	945	994	953	1016	1053	961	919	809	1062	963	912	972	993	819	947	741	817	793
11 McMaster	666	624	755	754	712	523	541	364	406	423	336	403	337	506	350	277	252	282
12 Memorial	884	971	980	849	804	615	708	676	769	771	836	829	814	706	762	785	741	564
13 Montreal	1027	1108	1247	1409	1142	1035	1087	1004	883	1078	1016	1120	1160	1134	1286	1096	1106	860
14 Mt. Allison	156	214	300	353	338	383	327	278	236	270	222	300	255	237	200	223	165	172
15 UNB	649	593	586	428	524	486	456	473	332	349	336	391	360	487	430	309	291	317
16 Queen's	761	1038	1018	882	774	724	711	720	622	641	602	538	655	723	721	691	605	548
17 Regina	421	450	537	506	445	429	420	399	311	362	432	429	375	317	296	280	254	253
18 St.Mary's	122	170	98	195	237	229	180	179	241	224	231	206	189	271	294	228	226	163
19 Simon Fr.	235	197	92	165	131	143	144	113	127	89	132	274	605	555	380	405	305	307
20 Toronto	1259	1410	1603	1842	1467	1393	1395	1572	1519	1779	1667	1664	1787	1885	1589	1795	1950	1861
21 Victoria	806	743	1043	728	718	826	748	770	767	880	912	1048	990	1084	1202	963	959	839
22 Waterloo	1323	1449	1502	1422	1258	1221	994	908	863	949	811	935	777	745	1029	1051	1285	1137
23 W.Ontario	700	738	758	723	592	534	498	422	353	427	387	342	412	347	324	373	368	361
24 W.Laurier	369	384	396	302	361	322	341	382	419	393	233	277	370	449	360	304	350	330
25 Windsor	326	329	235	319	301	385	343	295	428	346	367	367	402	445	386	458	551	517
<b>Total</b>	<b>16110</b>	<b>17494</b>	<b>18318</b>	<b>18055</b>	<b>16411</b>	<b>15993</b>	<b>15286</b>	<b>14658</b>	<b>14711</b>	<b>15147</b>	<b>14395</b>	<b>14722</b>	<b>15891</b>	<b>16898</b>	<b>16154</b>	<b>15930</b>	<b>16124</b>	<b>15082</b>

**2. German Enrolments 1990-2008**

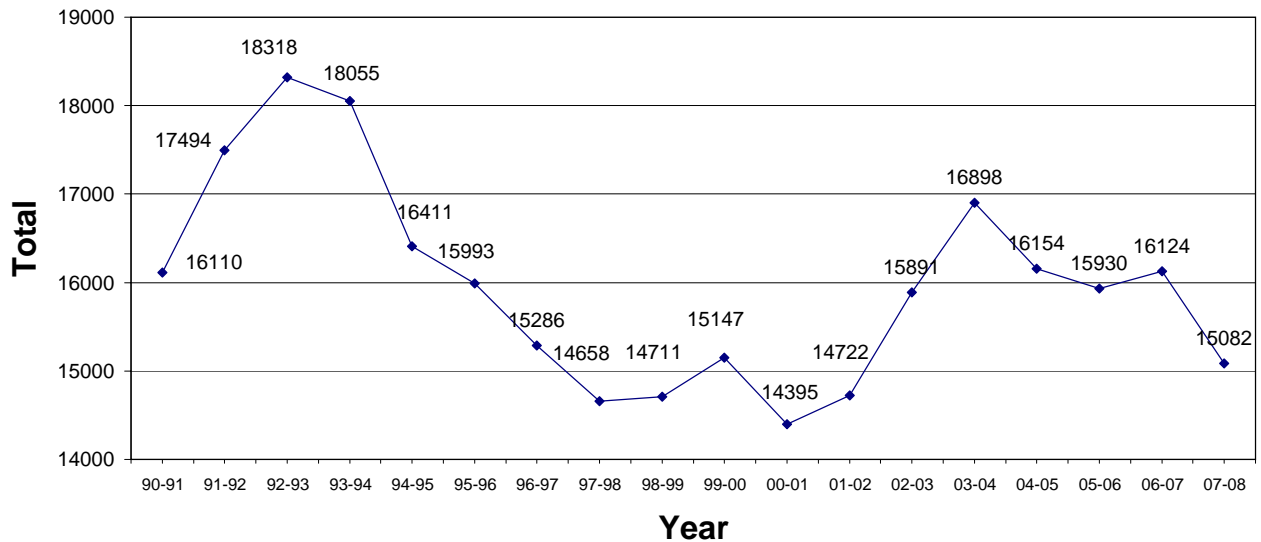


Table 3

## Ranking of 2006-2007 German Enrolments for 41 Universities

Alphabetical Listing			Ranking by German Course Registrations		Ranking by Market Share		
University	German Enr. 06-07	University Enr. 06-07	University	German Enr. 06-07			
1	Acadia	399	3,325	1	UBC	2420	12.00
2	Alberta	838	32,799	2	Toronto	1950	7.77
3	Bishop's	140	2,101	3	Waterloo	1285	7.28
4	Brandon	0	2,279	4	Montréal	1106	7.27
5	UBC	2420	33,306	5	Victoria	959	6.66
6	Brock	260	14,028	6	Dalhousie	878	6.64
7	Calgary	590	24,647	7	Alberta	838	5.27
8	Carleton	278	19,176	8	McGill	817	5.23
9	Concordia	437	19,748	9	Memorial	741	4.54
10	Dalhousie	878	13,226	10	Windsor	698	4.08
11	Guelph	281	17,183	11	UQAM	607	3.53
12	Lakehead	48	6,093	12	Queen's	605	3.36
13	Laurentian	72	6,495	13	Calgary	590	3.29
14	Laval	584	25,303	14	Laval	584	3.15
15	Lethbridge	103	7,048	15	Windsor	551	3.13
16	Manitoba	433	20,963	16	Ottawa	518	3.06
17	McGill	817	26,120	17	Concordia	437	2.95
18	McMaster	252	21,231	18	Manitoba	433	2.88
19	Memorial	741	14,180	19	Acadia	399	2.81
20	Montréal	1106	37,460	20	W. Ontario	368	2.75
21	Mount Allison	165	2,123	21	Wilfrid Laurier	350	2.75
22	Mount St. Vincent	21	2,347	22	Trent	314	2.55
23	UNB	291	10,106	23	Simon Fraser	305	2.39
24	Ottawa	518	27,694	24	UNB	291	2.31
25	P.E.I.	74	3,334	25	Guelph	281	2.22
26	UQAM	607	22,108	26	Carleton	278	2.21
27	Queen's	605	17,161	27	Brock	260	2.18
28	Regina	254	7,711	28	Regina	254	2.07
29	Saint F. Xavier	114	4,151	29	McMaster	252	1.87
30	Saint Mary's	226	6,731	30	Saskatchewan	229	1.85
31	Saskatchewan	229	15,051	31	Saint Mary's	226	1.66
32	Simon Fraser	305	14,012	32	Winnipeg	200	1.64
33	Toronto	1950	63,819	33	Mount Allison	165	1.52
34	Trent	314	6,910	34	Bishop's	140	1.46
35	Victoria	959	13,180	35	Saint F. Xavier	114	1.45
36	Waterloo	1285	24,396	36	Lethbridge	103	1.22
37	W. Ontario	368	30,197	37	P.E.I.	74	1.19
38	Wilfrid Laurier	350	12,467	38	Laurentian	72	1.11
39	Windsor	551	13,496	39	Lakehead	48	0.89
40	Winnipeg	200	6,345	40	Mount St. Vincent	21	0.79
41	York	698	41,977	41	Brandon	0	0.00

The university figures for full-time enrolment for 2006-2007 are taken from *Maclean's Guide to Canadian Universities 2007* (p. 116), which uses 2006-2007 enrolment figures. Note that market share is calculated by dividing total German course registrations for the year by full-time university enrolment x 100, since total university course registrations are not available.

**Table 4**  
**2007-2008 Enrolment Survey with 44 Universities Reporting**

<b>Column Key</b>										
1. Language	4. Culture/German Studies	7. Literature in Translation								
2. Reading	5. Culture/German Studies in Translation	8. Linguistics								
3. Business German	6. Literature	9. Other*								
<b>University</b>	<b>1</b>	<b>2</b>	<b>3</b>	<b>4</b>	<b>5</b>	<b>6</b>	<b>7</b>	<b>8</b>	<b>9</b>	<b>Total</b>
1 Acadia	252	0	0	0	34	6	0	0	0	292
2 Alberta	522	40	20	39	0	0	0	18	187	826
3 Athabasca	82	18	0	0	0	0	0	0	0	100
4 Augustana	197	0	0	0	0	8	0	0	0	205
5 Bishop's	53	0	0	25	0	17	0	0	0	95
6 Brandon	35	0	0	0	0	0	0	0	0	35
7 UBC	989	346	26	20	272	33	495	0	346	2527
8 Brock	196	0	0	0	29	0	0	0	0	225
9 Calgary	350	0	0	15	101	11	0	11	39	527
10 Carleton	289	0	0	0	0	0	0	0	0	289
11 Concordia	306	0	0	0	40	39	8	0	0	393
12 Dalhousie	374	0	0	8	305	49	0	0	0	736
13 Guelph	230	0	9	0	12	17	18	0	0	286
14 Lakehead	34	0	0	0	0	0	0	0	0	34
15 Laurentian	90	0	0	0	0	0	0	0	0	90
16 Laval	517	0	0	0	0	0	0	0	65	582
17 Lethbridge	107	0	0	4	0	0	0	0	0	111
18 Manitoba	356	0	0	0	13	24	0	0	11	404
19 McGill	569	1	17	10	92	27	77	0	0	793
20 McMaster	177	17	0	23	0	22	14	0	29	282
21 Memorial	441	0	9	0	96	7	11	0	0	564
22 Montreal	658	5	0	26	29	57	62	0	23	860
23 Mount Allison	137	0	0	0	24	11	0	0	0	172
24 Mt. St. Vincent	21	0	0	0	0	0	0	0	0	21
25 UNB	234	13	0	0	50	2	0	0	18	317
26 Ottawa	482	0	0	0	72	18	0	0	0	572
27 PEI	39	0	0	0	0	0	0	0	0	39
28 UQAM	467	84	0	0	35	0	0	0	0	586
29 Queen's	333	101	27	17	40	28	0	0	2	548
30 Regina	222	0	9	15	0	0	7	0	0	253
31 Saint F. Xavier	107	0	0	0	0	0	0	0	0	107
32 Saint Mary's	163	0	0	0	0	0	0	0	0	163
33 Saskatchewan	189	0	0	7	0	1	4	0	0	201
34 Simon Fraser	196	111	0	0	0	0	0	0	0	307
35A Toronto	1072	0	35	40	111	68	18	0	50	1394
35B UTM	416	0	0	10	18	23	0	0	0	467
36 Trent	217	1	0	30	32	0	0	0	10	290
37 Trinity Western	29	0	0	0	0	0	0	0	0	29
38 Victoria	423	0	0	0	252	13	151	0	0	839
39 Waterloo	682	0	34	0	278	6	39	10	88	1137
40 W. Ontario	325	0	8	0	0	22	0	0	6	361
41 Wilfrid Laurier	319	0	0	11	0	0	0	0	0	330
42 Windsor	194	3	0	0	83	0	78	159	0	517
43 Winnipeg	163	0	0	0	4	8	0	0	0	175
44 York	392	0	0	33	204	10	30	0	0	669
<b>Total</b>	<b>13646</b>	<b>740</b>	<b>194</b>	<b>333</b>	<b>2226</b>	<b>527</b>	<b>1012</b>	<b>198</b>	<b>874</b>	<b>19750</b>

The total enrolment for German this year reported by 44 universities is 19,750.

\*Courses included under column 9 (other) are Danish, Norwegian, Swedish, Scandinavian, Dutch, research methods, comparative literature, literary theory, translation, film courses, and work and study in Germany.

**Table 5**  
**Total Enrolment in Language Courses**

The following 26 universities have provided a complete data set for the 16 years 1992-2008 and will be used for tables 5 through 10:

Alberta, Brandon, UBC, Brock, Calgary, Dalhousie, Guelph, Lakehead, Laval, McGill, McMaster, Memorial, Montreal, Mount Allison, UNB, Ottawa, Queen's, Regina, Saint Mary's, Toronto, Victoria, Waterloo, W. Ontario, Wilfrid Laurier, Windsor, York.

	92-93	93-94	94-95	95-96	96-97	97-98	98-99	99-00	00-01	01-02	02-03	03-04	04-05	05-06	06-07	07-08
<b>1st Year</b>	9166	8580	7912	7790	7833	7841	7101	7601	7074	7525	7953	8287	8145	7675	8023	7545
<b>2nd Year</b>	2985	2890	2513	2238	2222	2424	2060	2144	1957	1954	2146	2284	2141	2053	2026	1950
<b>3rd Year</b>	1528	1505	1505	1336	1083	1206	897	976	940	903	868	984	928	1071	966	823
<b>4th Year</b>	916	887	761	736	607	472	642	421	345	211	261	386	255	186	194	168
<b>Total</b>	14595	13862	12691	12100	11745	11943	10700	11142	10316	10593	11228	11941	11469	10985	11209	10486

**5. Total Enrolment in Language Courses**

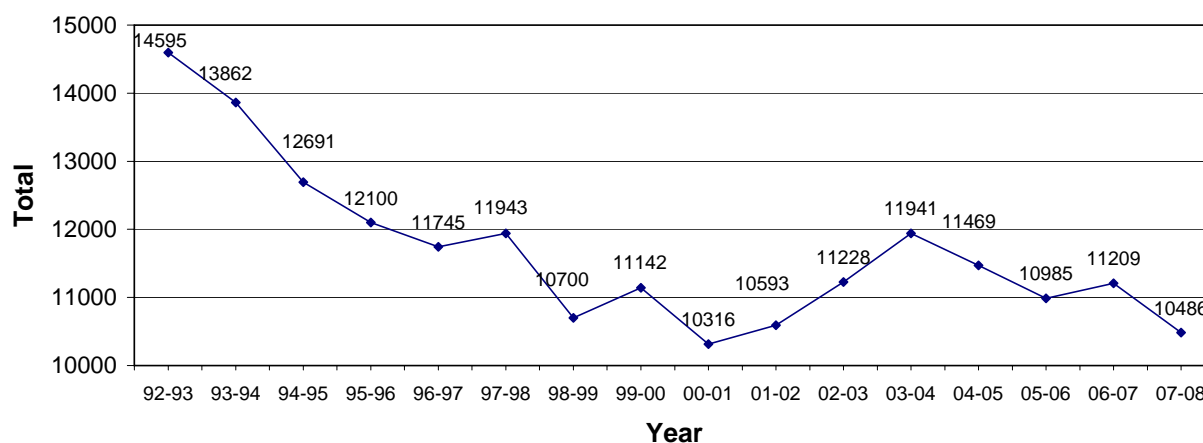


Table 5a

Total Enrolment in Language Courses (1st Year)

University	92-93	93-94	94-95	95-96	96-97	97-98	98-99	99-00	00-01	01-02	02-03	03-04	04-05	05-06	06-07	07-08
1 Alberta	592	522	450	448	376	392	386	426	298	328	346	338	317	320	317	304
2 Brandon	34	38	36	34	24	106	46	24	24	22	20	36	25	21	0	35
3 UBC	487	448	366	360	401	432	432	411	522	669	739	600	663	552	689	638
4 Brock	221	170	179	206	181	192	182	122	154	82	84	64	182	191	205	177
5 Calgary	362	324	284	256	244	197	183	167	169	51	52	226	182	197	245	225
6 Dalhousie	904	894	956	1178	1060	1052	545	386	374	291	284	308	243	208	214	250
7 Guelph	178	189	147	147	158	164	157	141	155	169	184	235	195	198	186	185
8 Lakehead	88	34	57	41	52	46	38	32	28	34	28	28	28	32	48	34
9 Laval	319	277	157	171	219	110	165	266	189	262	372	462	552	470	408	394
10 McGill	434	382	362	348	349	326	458	416	332	442	418	372	357	345	347	356
11 McMaster	396	306	334	207	232	182	169	162	201	215	196	363	226	139	142	142
12 Memorial	730	624	654	472	563	535	650	548	595	575	555	468	479	519	459	328
13 Montreal	470	432	431	306	394	338	302	780	619	837	841	824	883	731	904	646
14 Mt.Allison	136	154	137	184	160	139	136	114	88	123	103	117	93	99	85	109
15 UNB	234	238	204	205	201	279	188	229	174	246	265	318	248	195	207	204
16 Ottawa	222	232	217	224	200	169	170	166	154	201	195	263	246	293	256	322
17 Queen's	366	397	375	370	364	358	347	380	314	269	332	347	334	313	294	261
18 Regina	469	418	338	326	310	276	201	243	330	316	314	232	226	216	168	184
19 St.Mary's	68	169	162	156	128	141	205	176	174	160	139	183	179	133	116	112
20 Toronto	489	538	409	390	457	698	654	946	796	748	876	956	806	802	986	956
21 Victoria	397	274	297	368	341	413	320	300	365	441	407	410	352	315	322	296
22 Waterloo	664	664	546	615	505	412	391	429	262	337	358	352	532	539	560	502
23 Ontario	350	342	320	234	302	278	178	250	298	226	296	166	194	230	226	240
24 Wilfrid L.	185	176	176	155	187	220	156	140	118	118	167	225	208	199	216	236
25 Windsor	109	134	130	240	175	144	231	145	158	176	173	170	163	166	133	149
26 York	262	204	188	149	250	242	211	202	183	187	209	224	232	252	290	260
<b>Total</b>	<b>9166</b>	<b>8580</b>	<b>7912</b>	<b>7790</b>	<b>7833</b>	<b>7841</b>	<b>7101</b>	<b>7601</b>	<b>7074</b>	<b>7525</b>	<b>7953</b>	<b>8287</b>	<b>8145</b>	<b>7675</b>	<b>8023</b>	<b>7545</b>

5a. Total Enrolment in Language Courses (1st Year)

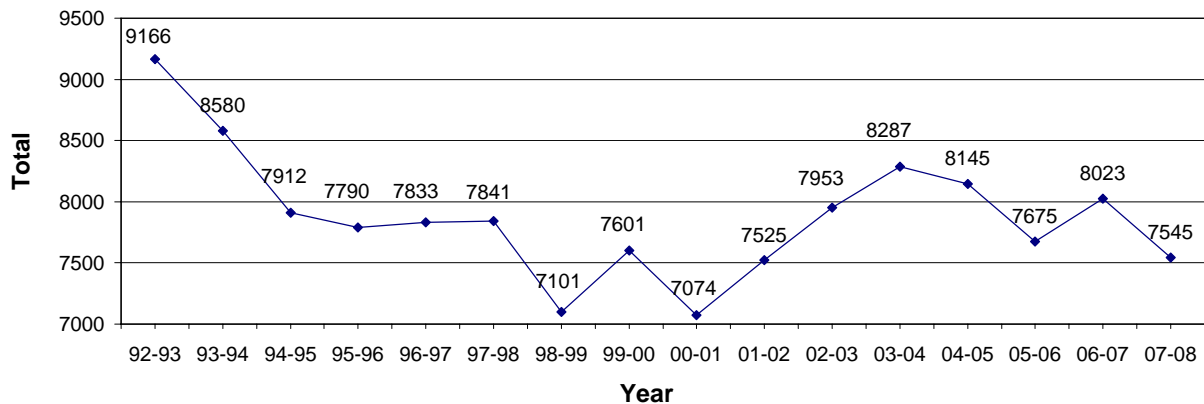


Table 5b

**Total Enrolment in Language Courses (2nd Year)**

University	92-93	93-94	94-95	95-96	96-97	97-98	98-99	99-00	00-01	01-02	02-03	03-04	04-05	05-06	06-07	07-08
1 Alberta	194	226	214	152	162	226	156	122	126	100	122	108	142	137	150	131
2 Brandon	8	8	10	11	0	13	9	5	6	8	7	4	15	0	0	0
3 UBC	225	232	212	181	135	172	225	189	152	206	241	201	202	226	207	231
4 Brock	64	40	56	48	29	44	14	71	18	5	16	14	20	14	13	13
5 Calgary	151	105	116	119	111	88	81	83	68	73	83	87	56	64	74	65
6 Dalhousie	120	88	94	118	123	97	90	80	64	64	102	124	123	86	92	84
7 Guelph	38	35	45	37	63	43	29	38	36	38	41	45	39	45	23	33
8 Lakehead	0	0	0	0	0	0	0	0	0	0	0	0	0	0	0	0
9 Laval	92	130	62	113	74	102	57	80	75	77	82	115	83	100	68	70
10 McGill	215	272	245	179	146	164	204	206	211	172	160	159	151	128	147	134
11 McMaster	185	85	22	44	144	54	92	120	38	49	43	50	46	47	27	35
12 Memorial	56	55	74	24	44	45	53	70	66	76	74	72	70	85	74	55
13 Montreal	220	264	168	109	213	281	131	66	192	21	78	49	70	49	10	12
14 Mt.Allison	38	38	58	60	36	0	18	48	30	31	44	49	51	34	18	22
15 UNB	32	32	22	19	12	36	30	28	20	27	25	20	32	28	19	17
16 Ottawa	84	52	39	39	22	32	25	34	24	50	43	38	64	54	100	102
17 Queen's	218	170	138	114	144	129	49	40	79	77	81	103	65	67	65	63
18 Regina	49	62	42	59	64	63	66	64	57	64	29	37	28	27	34	18
19 St.Mary's	20	18	25	29	16	15	30	33	26	28	20	29	38	27	34	28
20 Toronto	222	314	280	246	184	233	193	233	219	404	388	418	268	358	308	404
21 Victoria	186	206	141	131	134	136	138	155	142	123	141	142	135	85	88	64
22 Waterloo	200	155	169	123	112	124	117	108	121	79	72	104	151	147	171	133
23 W. Ontario	165	164	108	94	70	92	80	88	27	23	27	78	84	94	90	70
24 Wilfrid L.	71	32	62	74	72	81	73	65	68	38	99	109	75	55	56	49
25 Windsor	34	17	37	29	50	40	29	44	40	35	34	37	61	34	72	21
26 York	98	90	74	86	62	114	71	74	52	86	94	92	72	62	86	96
<b>Total</b>	<b>2985</b>	<b>2890</b>	<b>2513</b>	<b>2238</b>	<b>2222</b>	<b>2424</b>	<b>2060</b>	<b>2144</b>	<b>1957</b>	<b>1954</b>	<b>2146</b>	<b>2284</b>	<b>2141</b>	<b>2053</b>	<b>2026</b>	<b>1950</b>

**5b. Total Enrolment in Language Courses (2nd Year)**

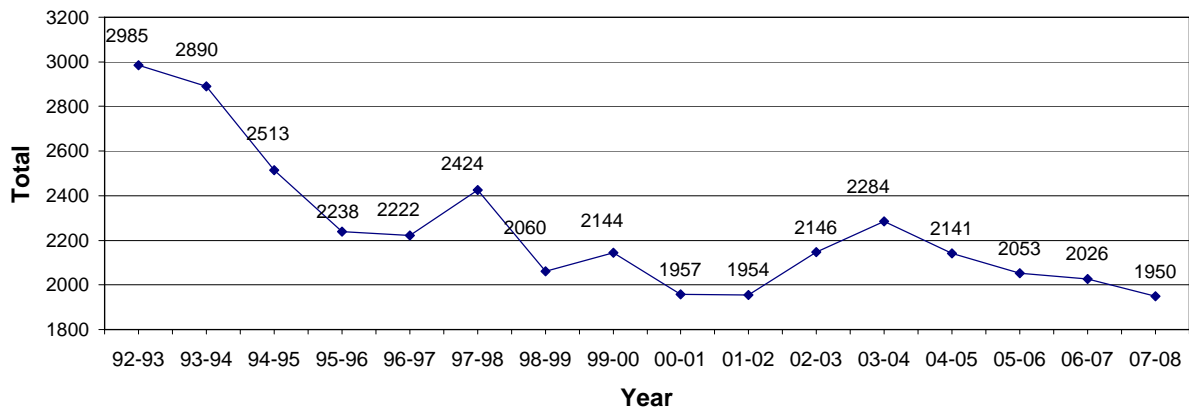


Table 5c

**Total Enrolment in Language Courses (3rd Year)**

University	92-93	93-94	94-95	95-96	96-97	97-98	98-99	99-00	00-01	01-02	02-03	03-04	04-05	05-06	06-07	07-08
1 Alberta	97	106	136	132	129	120	56	94	42	58	72	67	71	74	76	87
2 Brandon	0	0	0	7	12	0	0	0	0	0	0	0	0	0	0	0
3 UBC	107	102	104	110	76	123	85	77	95	91	129	86	85	122	119	79
4 Brock	14	22	10	36	16	20	0	40	0	14	0	8	4	15	8	6
5 Calgary	85	61	60	52	46	37	44	26	43	24	32	42	41	41	37	26
6 Dalhousie	46	32	42	0	0	45	18	26	17	38	36	30	64	53	69	40
7 Guelph	9	13	12	28	13	14	8	8	4	8	12	11	15	6	10	12
8 Lakehead	0	0	13	0	0	0	0	0	0	0	0	0	0	0	0	0
9 Laval	73	34	50	38	0	44	34	54	66	69	47	81	60	100	53	53
10 McGill	107	120	122	118	140	134	121	111	106	86	108	87	86	89	73	68
11 McMaster	58	183	162	134	55	53	43	43	32	34	27	29	21	41	29	0
12 Memorial	34	31	20	33	28	10	20	53	48	59	53	70	60	62	61	58
13 Montreal	84	171	187	77	51	78	82	0	0	0	0	0	0	0	0	0
14 Mt.Allison	22	0	0	19	36	35	20	20	30	20	20	21	34	18	29	6
15 UNB	17	10	6	13	7	2	15	6	17	7	9	13	13	16	5	13
16 Ottawa	31	31	23	32	30	28	20	20	17	25	26	26	25	48	40	58
17 Queen's	157	53	31	60	15	66	40	31	13	0	0	0	0	0	0	0
18 Regina	8	15	22	20	15	29	13	14	15	9	11	17	12	16	15	12
19 St.Mary's	0	0	36	0	24	0	0	9	0	18	0	27	10	34	23	0
20 Toronto	230	244	186	154	160	101	99	93	99	102	92	117	110	154	104	114
21 Victoria	80	92	103	97	56	96	56	97	88	87	68	91	84	41	54	49
22 Waterloo	111	77	43	40	66	52	35	57	120	65	33	7	22	44	60	47
23 W. Ontario	49	26	24	38	25	34	22	30	16	20	14	19	17	7	16	15
24 Wilfrid L.	49	20	34	28	28	26	4	6	10	18	35	49	27	26	28	34
25 Windsor	20	22	27	26	19	15	17	18	34	15	8	34	24	20	15	24
26 York	40	40	52	44	36	44	45	43	28	36	36	52	43	44	42	22
<b>Total</b>	<b>1528</b>	<b>1505</b>	<b>1505</b>	<b>1336</b>	<b>1083</b>	<b>1206</b>	<b>897</b>	<b>976</b>	<b>940</b>	<b>903</b>	<b>868</b>	<b>984</b>	<b>928</b>	<b>1071</b>	<b>966</b>	<b>823</b>

**5c. Total Enrolment in Language Courses (3rd Year)**

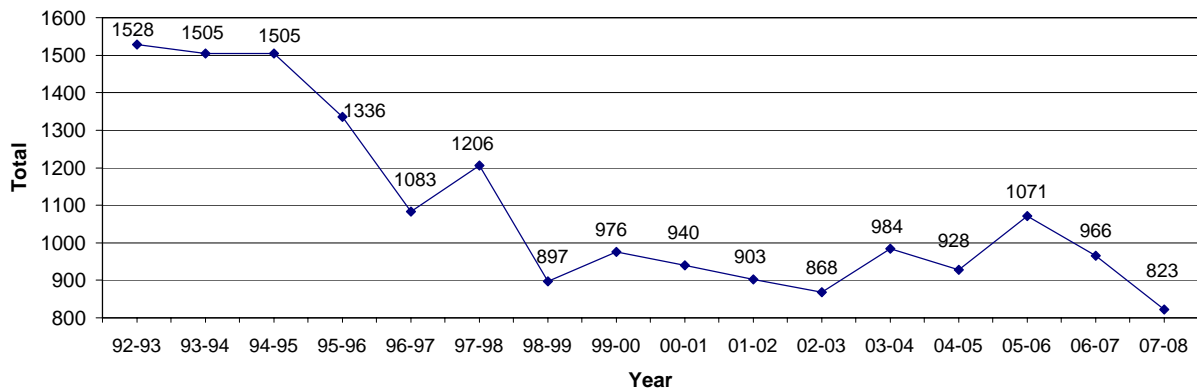
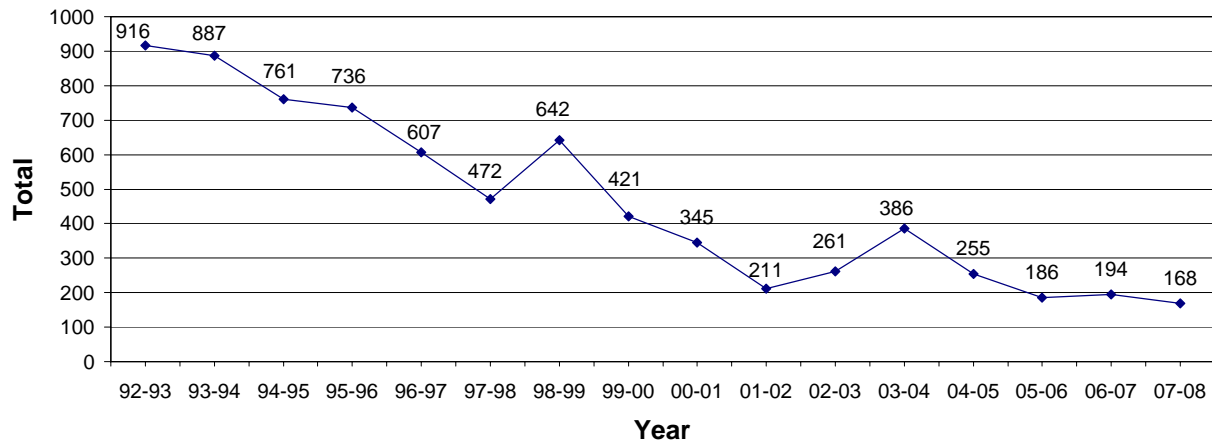


Table 5d

Total Enrolment in Language Courses (4th Year)

University	92-93	93-94	94-95	95-96	96-97	97-98	98-99	99-00	00-01	01-02	02-03	03-04	04-05	05-06	06-07	07-08
1 Alberta	30	47	16	42	30	28	26	20	36	35	19	40	25	38	32	0
2 Brandon	4	0	5	0	0	0	0	0	0	0	0	0	0	0	0	0
3 UBC	76	40	64	22	28	28	44	33	35	36	47	53	38	27	32	41
4 Brock	15	16	16	28	0	14	16	8	8	2	4	0	0	0	0	0
5 Calgary	34	51	47	32	44	12	20	33	19	15	20	12	8	29	18	34
6 Dalhousie	32	0	0	0	42	0	40	27	0	0	0	0	0	0	0	0
7 Guelph	0	5	3	4	9	4	0	0	0	0	0	0	0	0	0	0
8 Lakehead	0	0	0	0	0	0	0	0	0	0	0	0	0	0	0	0
9 Laval	10	109	38	38	0	10	51	45	0	0	0	64	0	0	0	0
10 McGill	46	45	25	52	43	39	21	17	34	0	17	17	15	10	9	11
11 McMaster	0	84	83	41	30	45	38	23	20	21	11	6	8	0	8	0
12 Memorial	0	0	6	0	0	0	0	0	0	0	0	10	0	0	5	0
13 Montreal	150	122	148	211	88	54	146	0	0	0	0	0	0	0	0	0
14 Mt.Allison	20	26	12	19	26	12	0	0	0	0	0	0	0	0	0	0
15 UNB	0	4	0	0	7	6	2	11	3	5	4	8	4	4	8	0
16 Ottawa	0	30	43	41	30	4	31	0	0	0	0	0	0	0	0	0
17 Queen's	130	38	34	8	33	0	10	16	0	0	31	17	18	20	8	9
18 Regina	0	0	0	0	0	0	0	0	0	7	2	8	4	0	6	8
19 St.Mary's	0	0	10	0	12	0	0	0	0	0	0	0	0	0	5	23
20 Toronto	192	124	77	62	54	75	22	47	73	0	17	55	24	20	27	14
21 Victoria	46	38	18	44	37	19	88	99	32	45	60	60	56	12	16	14
22 Waterloo	36	21	27	0	0	10	21	0	47	0	0	0	0	0	0	0
23 W. Ontario	24	22	0	7	27	22	12	19	0	0	0	12	0	0	0	0
24 Wilfrid L.	29	20	49	33	22	25	3	7	12	8	10	6	0	0	0	0
25 Windsor	0	21	16	30	17	23	11	5	0	21	0	0	20	2	3	0
26 York	42	24	24	22	28	42	40	11	26	16	19	18	35	24	17	14
<b>Total</b>	<b>916</b>	<b>887</b>	<b>761</b>	<b>736</b>	<b>607</b>	<b>472</b>	<b>642</b>	<b>421</b>	<b>345</b>	<b>211</b>	<b>261</b>	<b>386</b>	<b>255</b>	<b>186</b>	<b>194</b>	<b>168</b>

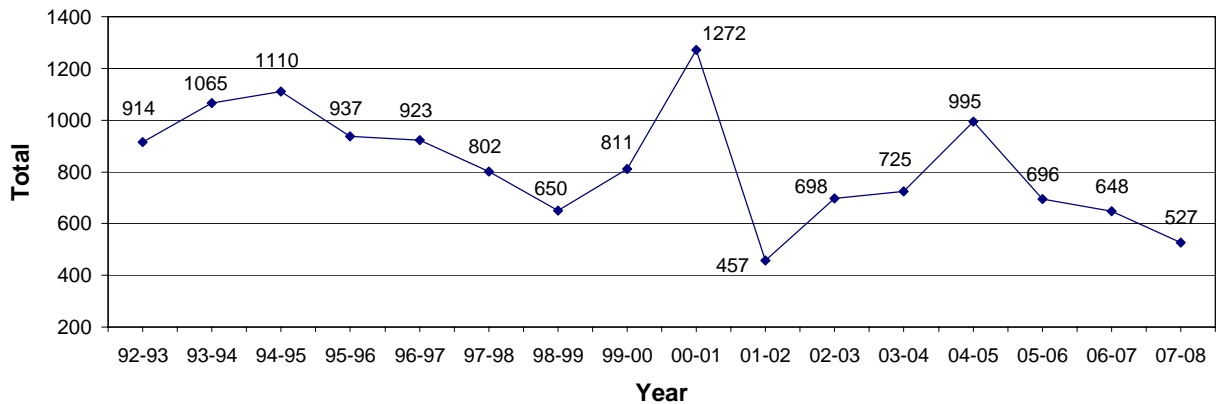
5d. Total Enrolment in Language Courses (4th Year)



**Table 6**  
**Total Enrolment in Reading Courses**

University	92-93	93-94	94-95	95-96	96-97	97-98	98-99	99-00	00-01	01-02	02-03	03-04	04-05	05-06	06-07	07-08
1 Alberta	107	192	122	104	62	70	76	56	48	46	34	48	52	46	56	40
2 Brandon	0	0	0	0	0	0	0	0	0	0	0	0	0	0	0	0
3 UBC	87	118	164	222	250	192	242	587	879	221	399	386	581	426	321	346
4 Brock	0	0	0	0	0	0	0	0	0	0	0	0	0	0	0	0
5 Calgary	123	116	112	115	113	97	88	91	105	4	4	6	0	0	0	0
6 Dalhousie	82	100	74	0	77	0	12	0	1	27	36	40	34	20	28	0
7 Guelph	0	0	0	0	5	0	0	0	0	0	0	0	0	0	0	0
8 Lakehead	0	0	0	0	0	0	0	0	4	0	0	0	0	0	0	0
9 Laval	10	39	112	51	0	32	14	0	0	0	0	0	0	0	0	0
10 McGill	5	24	30	1	2	7	18	5	0	0	0	0	31	0	24	1
11 McMaster	0	0	0	0	0	0	0	0	0	0	0	0	0	0	0	17
12 Memorial	29	0	0	19	0	18	0	0	0	0	0	0	25	0	0	0
13 Montreal	76	77	57	59	102	88	0	0	0	9	5	21	6	13	3	5
14 Mt.Allison	0	0	0	0	0	0	0	0	0	0	0	0	0	0	0	0
15 UNB	280	137	262	228	196	149	87	0	82	49	44	54	79	39	33	13
16 Ottawa	4	0	0	0	0	0	0	0	13	0	0	20	0	0	0	0
17 Queen's	0	0	0	0	0	0	0	13	28	37	60	88	113	113	93	101
18 Regina	0	0	4	0	0	1	4	1	0	1	1	0	0	0	0	0
19 St.Mary's	5	0	0	0	0	0	0	0	0	0	0	0	0	0	0	0
20 Toronto	51	171	80	85	84	65	58	36	62	39	104	40	72	38	90	0
21 Victoria	26	22	20	26	17	39	27	6	29	1	0	0	0	0	0	0
22 Waterloo	29	29	9	27	9	8	0	0	5	0	0	0	2	0	0	0
23 W. Ontario	0	40	64	0	0	0	6	0	0	14	11	0	0	1	0	0
24 Wilfrid L.	0	0	0	0	0	0	0	0	0	0	0	0	0	0	0	0
25 Windsor	0	0	0	0	0	0	0	0	0	0	0	22	0	0	0	4
26 York	0	0	0	0	6	36	18	16	16	9	0	0	0	0	0	0
<b>Total</b>	<b>914</b>	<b>1065</b>	<b>1110</b>	<b>937</b>	<b>923</b>	<b>802</b>	<b>650</b>	<b>811</b>	<b>1272</b>	<b>457</b>	<b>698</b>	<b>725</b>	<b>995</b>	<b>696</b>	<b>648</b>	<b>527</b>

**6. Total Enrolment in Reading Courses**



**Table 7**  
**Total Enrolment in Culture/German Studies**

University	92-93	93-94	94-95	95-96	96-97	97-98	98-99	99-00	00-01	01-02	02-03	03-04	04-05	05-06	06-07	07-08
1 Alberta	46	36	17	36	55	42	50	15	21	0	13	10	9	0	14	39
2 Brandon	0	3	0	0	1	11	0	0	0	0	0	0	0	0	0	0
3 UBC	52	0	0	0	0	0	0	0	0	0	0	0	0	0	0	20
4 Brock	0	0	40	77	65	0	42	14	0	86	69	0	0	0	0	0
5 Calgary	0	14	26	19	28	9	41	38	41	143	177	18	13	22	4	15
6 Dalhousie	20	12	22	62	31	5	86	0	0	0	0	19	9	0	0	8
7 Guelph	0	13	15	0	18	18	6	5	11	15	13	12	16	14	5	0
8 Lakehead	0	0	0	0	0	0	0	0	0	0	0	0	0	0	0	0
9 Laval	20	9	6	0	10	7	10	0	0	13	0	9	0	0	0	0
10 McGill	5	17	22	14	6	0	0	0	0	0	0	14	0	0	16	10
11 McMaster	0	0	0	0	0	0	0	18	11	15	6	0	19	27	26	23
12 Memorial	0	0	0	0	0	3	0	0	0	0	0	0	0	0	0	0
13 Montreal	112	21	12	38	23	16	44	35	52	62	46	38	69	83	42	26
14 Mt.Allison	0	9	0	0	0	28	0	0	0	0	0	0	0	0	0	0
15 UNB	0	0	18	12	9	0	6	75	0	52	0	28	24	16	6	0
16 Ottawa	0	0	58	0	0	0	0	0	0	12	0	0	0	0	0	0
17 Queen's	0	0	0	40	56	78	64	10	42	27	26	57	38	34	20	17
18 Regina	0	0	0	2	0	6	0	9	1	3	7	13	11	9	28	15
19 St.Mary's	0	0	0	0	0	0	4	4	2	0	0	0	0	0	0	0
20 Toronto	0	0	0	0	0	17	26	24	0	66	40	42	0	45	15	50
21 Victoria	0	0	0	37	35	41	59	44	102	64	30	60	83	0	0	0
22 Waterloo	180	242	252	189	98	146	108	154	103	187	154	181	0	0	0	0
23 W. Ontario	0	11	22	10	0	0	0	0	0	0	0	0	0	0	0	0
24 Wilfrid L.	0	0	0	0	0	0	0	11	17	11	31	38	0	0	0	11
25 Windsor	0	0	0	0	0	0	0	0	0	0	0	0	0	0	0	0
26 York	0	0	12	0	13	12	8	0	0	0	0	12	0	0	0	33
<b>Total</b>	<b>435</b>	<b>387</b>	<b>522</b>	<b>536</b>	<b>448</b>	<b>439</b>	<b>554</b>	<b>456</b>	<b>403</b>	<b>756</b>	<b>612</b>	<b>551</b>	<b>291</b>	<b>250</b>	<b>176</b>	<b>267</b>

**7. Total Enrolment in Culture/German Studies**

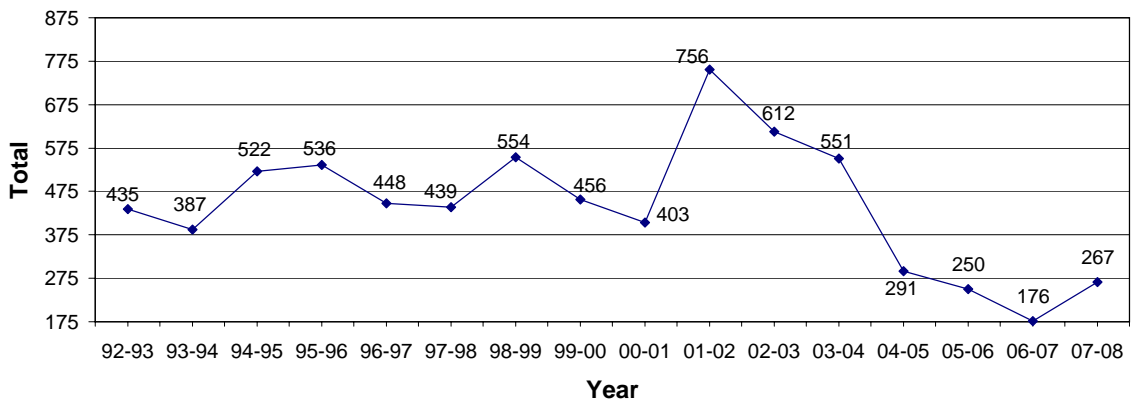
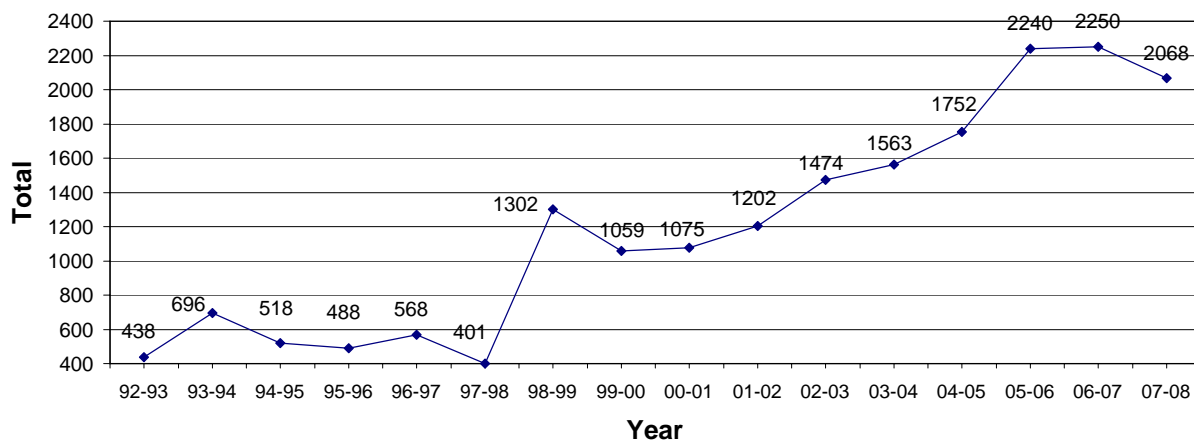


Table 8

Total Enrolment in Culture/German Studies in Translation

University	92-93	93-94	94-95	95-96	96-97	97-98	98-99	99-00	00-01	01-02	02-03	03-04	04-05	05-06	06-07	07-08
1 Alberta	0	0	0	0	0	0	0	7	9	0	0	6	11	10	0	0
2 Brandon	0	0	0	0	0	0	0	0	0	0	0	0	0	0	0	0
3 UBC	0	0	0	8	8	0	12	14	6	0	103	127	0	289	181	272
4 Brock	0	58	0	0	0	0	0	0	0	0	0	41	28	24	21	29
5 Calgary	0	31	37	37	31	0	59	0	40	40	68	59	153	131	138	101
6 Dalhousie	0	32	0	14	24	11	522	366	326	441	522	611	325	366	370	305
7 Guelph	11	0	0	0	0	0	10	11	13	18	15	12	27	22	18	12
8 Lakehead	0	0	0	0	0	0	0	0	0	0	0	0	0	0	0	0
9 Laval	0	12	0	0	0	0	10	21	7	0	0	0	0	0	0	0
10 McGill	0	8	0	12	0	0	0	0	131	26	61	95	110	0	65	92
11 McMaster	0	12	0	0	22	0	9	0	0	0	12	0	9	0	0	0
12 Memorial	28	35	31	34	35	45	37	96	119	105	105	60	109	65	130	96
13 Montreal	0	21	25	42	0	0	0	39	33	30	41	35	72	51	23	29
14 Mt.Allison	77	97	94	89	83	51	51	19	49	94	65	28	0	59	11	24
15 UNB	0	0	0	0	0	0	0	0	28	0	13	0	0	0	0	50
16 Ottawa	36	26	39	0	52	0	27	0	16	0	39	43	69	102	106	72
17 Queen's	34	55	35	0	0	54	0	0	0	0	27	20	26	78	50	40
18 Regina	0	0	0	0	0	0	0	0	0	9	0	0	0	0	0	0
19 St.Mary's	0	0	0	0	0	0	0	2	0	0	5	32	37	34	37	0
20 Toronto	64	58	0	135	190	121	142	110	61	22	18	17	70	118	92	129
21 Victoria	72	35	37	0	0	0	0	0	28	160	215	232	268	428	399	252
22 Waterloo	0	0	0	0	0	0	8	0	5	0	0	3	245	229	340	278
23 Ontario	68	42	27	0	0	0	44	0	0	0	10	0	0	0	0	0
24 Wilfrid L.	0	0	0	0	0	0	153	147	0	57	0	38	0	0	13	0
25 Windsor	48	90	73	42	39	27	88	71	51	60	52	0	42	31	102	83
26 York	0	84	120	75	84	92	130	156	153	140	103	104	151	203	154	204
<b>Total</b>	<b>438</b>	<b>696</b>	<b>518</b>	<b>488</b>	<b>568</b>	<b>401</b>	<b>1302</b>	<b>1059</b>	<b>1075</b>	<b>1202</b>	<b>1474</b>	<b>1563</b>	<b>1752</b>	<b>2240</b>	<b>2250</b>	<b>2068</b>

8. Total Enrolment in Culture/German Studies in Translation



**Table 9**  
**Total Enrolment in Literature**

University	92-93	93-94	94-95	95-96	96-97	97-98	98-99	99-00	00-01	01-02	02-03	03-04	04-05	05-06	06-07	07-08
1 Alberta	46	62	48	58	33	36	34	45	30	36	37	31	39	33	39	0
2 Brandon	0	0	0	1	11	2	0	0	0	0	0	0	0	0	0	0
3 UBC	142	123	131	128	72	119	79	79	59	73	92	320	0	124	62	33
4 Brock	8	38	29	35	37	31	12	56	10	0	0	14	4	5	8	0
5 Calgary	75	93	75	103	80	61	18	41	35	22	37	23	0	8	16	11
6 Dalhousie	70	98	124	50	56	80	74	74	92	74	109	94	73	68	105	49
7 Guelph	35	37	27	29	32	29	12	26	20	32	29	28	27	25	17	17
8 Lakehead	0	0	0	0	0	0	0	0	0	0	0	0	0	0	0	0
9 Laval	19	13	19	0	45	0	7	0	0	20	13	4	0	0	0	0
10 McGill	107	120	143	183	193	90	76	103	50	85	53	54	92	51	40	27
11 McMaster	74	40	87	73	40	37	30	42	19	29	27	25	16	0	0	22
12 Memorial	14	44	19	43	35	20	9	1	8	14	19	26	17	19	2	7
13 Montreal	128	150	58	92	109	90	84	68	80	64	79	45	69	84	48	57
14 Mt.Allison	27	29	37	31	22	12	11	18	25	32	23	22	22	13	22	11
15 UNB	20	4	9	6	15	1	3	0	4	0	0	26	18	0	0	2
16 Ottawa	40	43	39	69	0	30	19	11	0	8	8	8	11	13	16	18
17 Queen's	24	69	67	76	21	35	28	60	48	53	42	20	32	29	26	28
18 Regina	9	7	26	20	21	10	11	5	14	13	2	4	8	8	3	0
19 St.Mary's	0	8	4	44	0	23	2	0	1	0	0	0	12	0	0	0
20 Toronto	206	270	219	175	155	135	161	131	141	167	142	138	77	107	136	91
21 Victoria	236	50	50	62	59	46	45	131	74	68	69	89	0	0	0	13
22 Waterloo	123	110	95	79	90	75	70	81	58	94	24	18	12	19	17	6
23 W. Ontario	86	60	27	51	54	24	0	37	38	46	46	40	29	22	15	22
24 Wilfrid L.	62	58	40	32	32	30	0	8	7	0	7	0	13	0	0	0
25 Windsor	25	26	16	14	1	5	0	0	4	7	5	4	0	3	64	0
26 York	125	120	64	56	58	33	58	74	30	18	15	26	11	27	37	10
<b>Total</b>	<b>1701</b>	<b>1672</b>	<b>1453</b>	<b>1510</b>	<b>1271</b>	<b>1054</b>	<b>843</b>	<b>1091</b>	<b>847</b>	<b>955</b>	<b>878</b>	<b>1059</b>	<b>582</b>	<b>658</b>	<b>673</b>	<b>424</b>

**9. Total Enrolment in Literature**

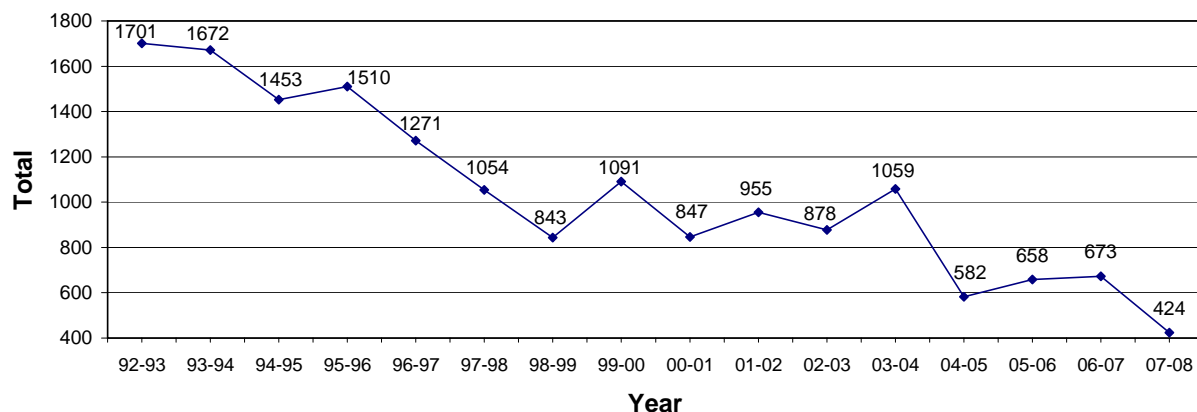


Table 10

Total Enrolment in Literature in Translation

University	92-93	93-94	94-95	95-96	96-97	97-98	98-99	99-00	00-01	01-02	02-03	03-04	04-05	05-06	06-07	07-08
1 Alberta	0	0	0	10	0	0	0	10	0	0	0	0	0	0	0	0
2 Brandon	0	0	0	0	0	0	0	0	0	0	0	0	0	0	0	0
3 UBC	40	138	24	19	69	75	140	106	113	138	161	239	400	312	523	495
4 Brock	0	0	0	0	0	0	3	0	0	0	0	0	0	0	0	0
5 Calgary	35	0	0	0	42	0	24	22	0	8	0	11	0	14	17	0
6 Dalhousie	0	26	20	0	26	36	0	28	0	0	0	0	0	0	0	0
7 Guelph	0	0	0	0	0	34	4	6	8	6	10	21	5	0	14	18
8 Lakehead	0	0	0	0	0	0	0	0	0	0	0	0	0	0	0	0
9 Laval	0	6	0	0	0	0	65	0	25	12	0	33	0	0	0	0
10 McGill	22	22	62	52	31	40	137	80	24	137	146	0	78	102	94	77
11 McMaster	0	16	24	12	10	27	18	15	0	40	0	0	0	10	0	14
12 Memorial	99	60	0	0	0	0	0	3	0	0	0	0	2	35	9	11
13 Montreal	0	30	20	18	0	0	15	24	0	0	0	50	25	31	26	29
14 Mt.Allison	0	0	0	0	0	0	0	0	0	0	0	0	0	0	0	0
15 UNB	0	0	0	0	0	0	0	0	8	5	0	3	12	11	0	0
16 Ottawa	89	0	0	0	0	0	0	0	9	16	0	18	0	32	0	0
17 Queen's	0	100	24	42	60	0	49	61	30	7	11	24	22	11	22	0
18 Regina	0	4	0	0	0	14	9	7	0	0	0	0	0	0	0	7
19 St.Mary's	5	0	0	0	0	0	0	0	0	0	0	0	0	0	10	0
20 Toronto	22	0	25	74	0	0	22	22	76	18	32	29	32	20	35	18
21 Victoria	0	0	0	0	9	7	0	0	0	0	0	0	224	82	80	151
22 Waterloo	0	0	0	0	0	0	0	0	0	0	0	4	0	0	12	39
23 W. Ontario	0	0	0	0	0	0	0	0	0	0	0	25	0	0	0	0
24 Wilfrid L.	0	0	0	0	0	0	0	0	0	0	0	0	0	0	0	0
25 Windsor	0	0	0	0	19	0	12	15	0	8	59	40	25	82	0	78
26 York	0	0	0	40	20	14	0	0	0	44	0	22	0	52	72	30
<b>Total</b>	<b>312</b>	<b>402</b>	<b>199</b>	<b>267</b>	<b>286</b>	<b>247</b>	<b>498</b>	<b>399</b>	<b>293</b>	<b>439</b>	<b>419</b>	<b>519</b>	<b>825</b>	<b>794</b>	<b>914</b>	<b>967</b>

10. Total Enrolment in Literature in Translation

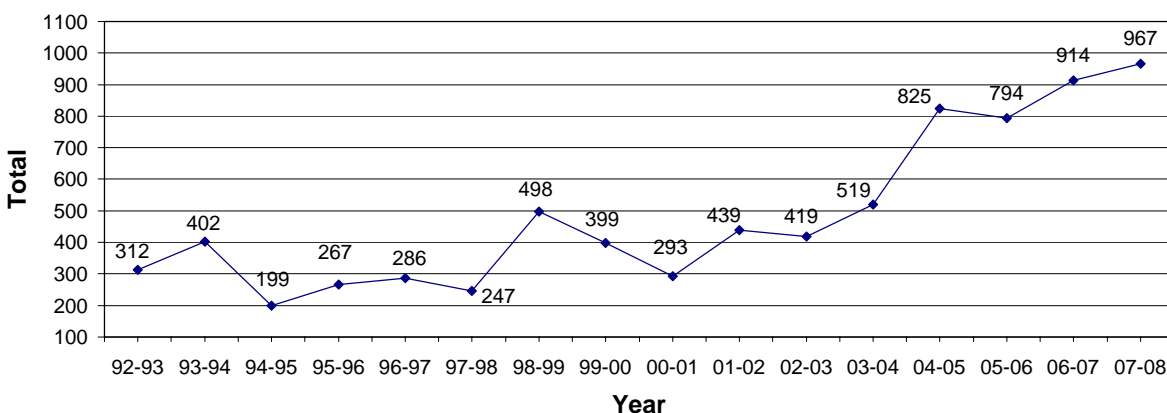


Table 11

CAUTG Enrolment Survey - Colleges

College	92-93	93-94	94-95	95-96	96-97	97-98	98-99	99-00	00-01	01-02	02-03	03-04	04-05	05-06	06-07	07-08
1 Ahuntsic	n.d.	210	87	226	200	212	n.d.	215	n.d.	155	240	n.d.	n.d.	165	220	202
2 Brescia	n.d.	n.d.	n.d.	n.d.	n.d.	n.d.	n.d.	40	60	36	24	18	8	cancl.	cancl.	cancl.
3 Capilano	n.d.	n.d.	n.d.	n.d.	113	103	n.d.	134	129	n.d.	116	120	143	120	79	34
4 Cariboo	n.d.	n.d.	n.d.	122	143	130	n.d.	n.d.	156	124	210	n.d.	n.d.	n.d.	n.d.	n.d.
5 Champlain St. Laur.	n.d.	121	145	n.d.	n.d.	n.d.	n.d.	n.d.	n.d.	n.d.	220	n.d.	n.d.	n.d.	n.d.	n.d.
6 Dawson	220	n.d.	n.d.	n.d.	n.d.	n.d.	n.d.	n.d.	n.d.	n.d.	n.d.	n.d.	n.d.	n.d.	n.d.	n.d.
7 Douglas	n.d.	106	130	83	92	113	n.d.	170	168	185	180	170	164	129	77	87
8 Francois-Xavier-G.	n.d.	n.d.	n.d.	n.d.	n.d.	n.d.	n.d.	n.d.	n.d.	n.d.	n.d.	n.d.	240	n.d.	n.d.	n.d.
9 Fraser Valley	n.d.	n.d.	n.d.	n.d.	n.d.	n.d.	n.d.	n.d.	51	42	0	cancl.	cancl.	cancl.	cancl.	cancl.
10 Grande Prairie Regional	n.d.	n.d.	n.d.	n.d.	n.d.	n.d.	n.d.	n.d.	cancl.	n.d.	n.d.	n.d.	n.d.	n.d.	n.d.	n.d.
11 Grant MacEwan	n.d.	n.d.	34	53	88	96	60	110	125	91	72	112	97	89	127	113
12 Jean-de-Brébeuf	n.d.	n.d.	n.d.	75	n.d.	n.d.	n.d.	n.d.	n.d.	n.d.	n.d.	n.d.	n.d.	n.d.	n.d.	n.d.
13 John Abbott	176	175	n.d.	168	n.d.	n.d.	n.d.	n.d.	n.d.	n.d.	n.d.	n.d.	n.d.	n.d.	n.d.	n.d.
14 Joliette-de-Lanoulière	n.d.	n.d.	n.d.	n.d.	n.d.	44	n.d.	n.d.	n.d.	n.d.	n.d.	n.d.	n.d.	n.d.	n.d.	n.d.
15 Kwantlen	n.d.	n.d.	n.d.	n.d.	n.d.	n.d.	n.d.	93	135	149	140	145	165	125	108	125
16 Langara	n.d.	n.d.	127	149	166	n.d.	4	cancl.	cancl.	cancl.	cancl.	cancl.	cancl.	cancl.	cancl.	cancl.
17 Lévis-Lauzon	107	145	183	212	260	360	n.d.	242	n.d.	326	n.d.	n.d.	n.d.	n.d.	n.d.	n.d.
18 de Limoilou	n.d.	n.d.	n.d.	n.d.	n.d.	176	n.d.	n.d.	n.d.	n.d.	n.d.	n.d.	n.d.	n.d.	n.d.	n.d.
19 Marie-Victorin	n.d.	n.d.	n.d.	47	80	57	n.d.	49	30	30	30	30	30	cancl.	cancl.	cancl.
20 de Maisonneuve	n.d.	123	n.d.	228	n.d.	n.d.	n.d.	n.d.	n.d.	n.d.	n.d.	n.d.	n.d.	n.d.	n.d.	n.d.
21 Malaspina	n.d.	n.d.	n.d.	n.d.	n.d.	n.d.	n.d.	n.d.	0	0	0	0	n.d.	0	0	0
22 Marianopolis	n.d.	316	n.d.	n.d.	n.d.	n.d.	n.d.	n.d.	n.d.	n.d.	n.d.	n.d.	n.d.	n.d.	n.d.	n.d.
23 Marie de France	n.d.	n.d.	n.d.	n.d.	n.d.	74	n.d.	n.d.	n.d.	n.d.	n.d.	n.d.	n.d.	116	0	n.d.
24 Medicine Hat	24	n.d.	n.d.	n.d.	n.d.	n.d.	n.d.	n.d.	n.d.	n.d.	n.d.	n.d.	n.d.	n.d.	n.d.	n.d.
25 Montmorency	141	142	152	n.d.	187	213	n.d.	n.d.	n.d.	n.d.	n.d.	n.d.	n.d.	n.d.	n.d.	n.d.
26 Okanagan	n.d.	200	150	143	n.d.	n.d.	n.d.	180	122	100	102	118	n.d.	n.d.	n.d.	n.d.
27 Mount Royal	n.d.	180	n.d.	159	n.d.	155	n.d.	n.d.	301	n.d.	n.d.	n.d.	n.d.	n.d.	n.d.	n.d.
28 N. American Baptist	n.d.	n.d.	22	11	n.d.	20	n.d.	n.d.	n.d.	n.d.	n.d.	n.d.	n.d.	n.d.	n.d.	n.d.
29 Rivière-du-Loup	n.d.	18	n.d.	n.d.	n.d.	n.d.	n.d.	n.d.	n.d.	n.d.	n.d.	n.d.	n.d.	n.d.	n.d.	n.d.
30 Rosemont	167	183	217	n.d.	190	160	n.d.	n.d.	n.d.	n.d.	n.d.	n.d.	n.d.	n.d.	n.d.	n.d.
31 Sainte-Foy	n.d.	n.d.	265	n.d.	355	n.d.	n.d.	n.d.	n.d.	n.d.	n.d.	n.d.	n.d.	n.d.	n.d.	n.d.
32 St.-Jérôme	n.d.	n.d.	n.d.	123	120	136	n.d.	n.d.	n.d.	n.d.	50	cancl.	cancl.	cancl.	cancl.	cancl.
33 Sherbrooke	n.d.	n.d.	n.d.	n.d.	136	n.d.	n.d.	n.d.	n.d.	n.d.	n.d.	n.d.	n.d.	n.d.	n.d.	n.d.
34 Trois-Rivières	n.d.	n.d.	100	n.d.	n.d.	n.d.	n.d.	n.d.	n.d.	n.d.	n.d.	n.d.	n.d.	n.d.	n.d.	n.d.
35 Vanier	n.d.	n.d.	201	199	n.d.	n.d.	n.d.	107	n.d.	n.d.	n.d.	n.d.	174	155	n.d.	n.d.
36 CÉGEP du Vieux-Montréal	n.d.	n.d.	180	278	185	210	n.d.	n.d.	n.d.	n.d.	n.d.	n.d.	n.d.	n.d.	n.d.	n.d.
37 André-Grasset															62	n.d.

There were replies from 6 colleges.

CAUTG Enrolment Survey May 2008

**Table 12**  
**Graduate Enrolments and Degrees Awarded**

2002-2003				Degrees Awarded		
	M.A.	Ph.D.	Total	M.A.	Ph.D.	Total
1 Alberta	7	6	13	1	0	1
2 UBC	11	7	18	N.D.	N.D.	0
3 Calgary	1	0	1	0	0	0
4 Dalhousie	7	0	7	6	0	6
5 McGill	12	10	22	4	0	4
6 Memorial	5	0	5	1	0	1
7 Montréal	7	3	10	1	0	1
8 Queen's	3	7	10	1	2	3
9 Toronto	5	14	19	5	0	5
10 Waterloo	12	2	14	7	0	7
<b>Totals</b>	<b>70</b>	<b>49</b>	<b>119</b>	<b>26</b>	<b>2</b>	<b>28</b>

2003-2004				Degrees Awarded		
	M.A.	Ph.D.	Total	M.A.	Ph.D.	Total
1 Alberta	6	7	13	1	0	1
2 UBC	8	6	14	3	1	4
3 Calgary	2	0	2	0	0	0
4 Dalhousie	6	0	6	4	0	4
5 McGill	9	8	17	3	1	4
6 Memorial	5	0	5	1	0	1
7 Montréal	8	2	10	2	2	4
8 Queen's	6	6	12	0	0	0
9 Toronto	9	4	13	5	2	7
10 Victoria	1	0	1	0	0	0
11 Waterloo	16	5	21	11	0	11
<b>Totals</b>	<b>76</b>	<b>38</b>	<b>114</b>	<b>30</b>	<b>6</b>	<b>36</b>

2004-2005				Degrees Awarded		
	M.A.	Ph.D.	Total	M.A.	Ph.D.	Total
1 Alberta	7	3	10	3	0	3
2 UBC	5	5	10	N.D.	N.D.	0
3 Calgary	4	0	4	0	0	0
4 Dalhousie	4	0	4	4	0	4
5 McGill	7	7	14	4	1	5
6 Memorial	2	0	2	1	0	1
7 Montréal	6	2	8	N.D.	N.D.	0
8 Queen's	5	7	12	3	2	5
9 Toronto	7	8	15	3	3	6
10 Victoria	3	0	3	0	0	0
11 Waterloo	18	6	24	11	0	11
<b>Totals</b>	<b>68</b>	<b>38</b>	<b>106</b>	<b>29</b>	<b>6</b>	<b>35</b>

2005-2006				Degrees Awarded		
	M.A.	Ph.D.	Total	M.A.	Ph.D.	Total
1 Alberta	11	3	14	2	0	2
2 UBC	6	5	11	3	0	3
3 Calgary	6	0	6	1	0	1
4 Dalhousie	4	0	4	4	0	4
5 Manitoba	1	0	1	0	0	0
6 McGill	4	7	11	0	0	0
7 Memorial	1	0	1	0	0	0
8 Montréal	16	3	19	1	1	2
9 Queen's	6	11	17	2	1	3
10 Toronto	4	10	14	5	3	8
11 Victoria	4	0	4	0	0	0
12 Waterloo	16	6	22	13	1	14
<b>Totals</b>	<b>79</b>	<b>45</b>	<b>124</b>	<b>31</b>	<b>6</b>	<b>37</b>

2006-2007				Degrees Awarded		
	M.A.	Ph.D.	Total	M.A.	Ph.D.	Total
1 Alberta	8	5	13	3	0	3
2 UBC	6	8	14	0	1	1
3 Calgary	6	0	6	1	0	1
4 Dalhousie	7	0	7	3	0	3
5 Manitoba	1	0	1	0	0	0
6 McGill	3	7	10	1	1	2
7 Memorial	0	0	0	1	0	1
8 Montréal	18	4	22	1	0	1
9 Queen's	6	8	14	2	2	4
10 Toronto	4	12	16	2	1	3
11 Victoria	4	0	4	0	0	0
12 Waterloo	15	8	23	13	0	13
<b>Totals</b>	<b>78</b>	<b>52</b>	<b>130</b>	<b>27</b>	<b>5</b>	<b>32</b>

2007-2008				Degrees Awarded		
	M.A.	Ph.D.	Total	M.A.	Ph.D.	Total
1 Alberta	6	5	11	2	0	2
2 UBC	5	9	14	3	1	4
3 Calgary	6	0	6	1	0	1
4 Dalhousie	3	0	3	7	0	7
5 Manitoba	1	0	1	0	0	0
6 McGill	3	10	13	0	0	0
7 Montréal	18	8	26	4	0	4
8 Queen's	6	10	16	2	0	2
9 Toronto	3	14	17	1	0	1
10 Victoria	3	0	3	1	0	1
11 Waterloo	18	8	26	11	0	11
<b>Totals</b>	<b>72</b>	<b>64</b>	<b>136</b>	<b>32</b>	<b>1</b>	<b>33</b>

There were 136 graduate students enrolled in 2007-2008, compared to 130 the previous year. The M.A.s decreased by 6 and the Ph.D.s increased three years in a row, this time by 12, for an overall increase in graduate enrolments of 6.

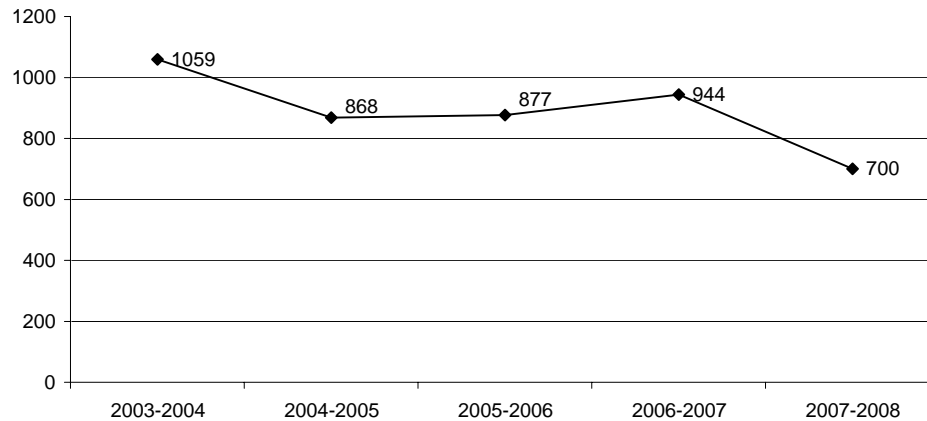
The number of M.A.s awarded increased by 5, and the number of Ph.D.s awarded decreased by 4, for an overall increase in graduate degrees awarded of 1.

**Table 13  
Film Courses**

Universities	2003-2004	2004-2005	2005-2006	2006-2007	2007-2008
Bishop's	0	0	10	0	0
Brock	0	0	0	5	0
Calgary	37	46	50	40	0
Dalhousie	610	322	348	320	228
Guelph	0	10	11	0	11
Laurentian	0	0	13	0	0
Manitoba	0	0	8	0	11
McGill	0	0	0	25	37
McMaster	0	0	7	0	19
Memorial	60	60	0	58	38
Montréal	50	35	15	0	30
Mount Allison	28	0	0	0	17
UNB	17	18	0	13	18
Ottawa	23	48	0	37	0
Queens	0	26	32	19	6
Regina	0	0	0	9	6
Saint Mary's	0	0	0	1	0
Toronto, UTM	17	14	4	54	18*
Victoria	185	260	338	288	240
Waterloo	32	5	11	12	13
Wilfrid Laurier	0	24	0	37	0
York	0	0	30	26	26
<b>TOTAL</b>	<b>1059</b>	<b>868</b>	<b>877</b>	<b>944</b>	<b>700</b>

\* The 18 enrolments were at UTM.

**13. Enrolment in Film Courses**



**Table 14**  
**Average Class Size - 1st Year Language for 45 Universities**

Trinity Western	10
Bishop's	11
Mount St. Vincent	11
Augustana	11
Queen's	16
Simon Fraser	17
Lakehead	17
Brandon	18
Regina	18
Trent	18
Montreal	19
Lethbridge	20
Alberta	20
P.E.I.	20
UNB	20
Acadia	20
Toronto*	21
U.B.C.	22
UQAM	22
York	22
UTMississauga*	22
Concordia	23
Dalhousie	23
Calgary	23
Manitoba	24
Carleton	24
McGill	24
Waterloo	24
Western Ontario	24
McMaster	24
Laval	24
Winnipeg	26
Mount Allison	27
Memorial	27
Victoria	27
Athabasca	27
Saint Mary's	28
Laurentian	29
Ottawa	29
Saskatchewan	29
Brock	30
Windsor	30
Wilfrid Laurier	34
Saint FX	40
Guelph	46

Range	10-46
Median	23
Mean	23

\*All previous tables for Toronto included UTMississauga numbers. They are listed separately in this and subsequent tables.

**Table 15**  
**Undergraduate Program Enrolments**  
**and Degrees Awarded for 31 Universities**

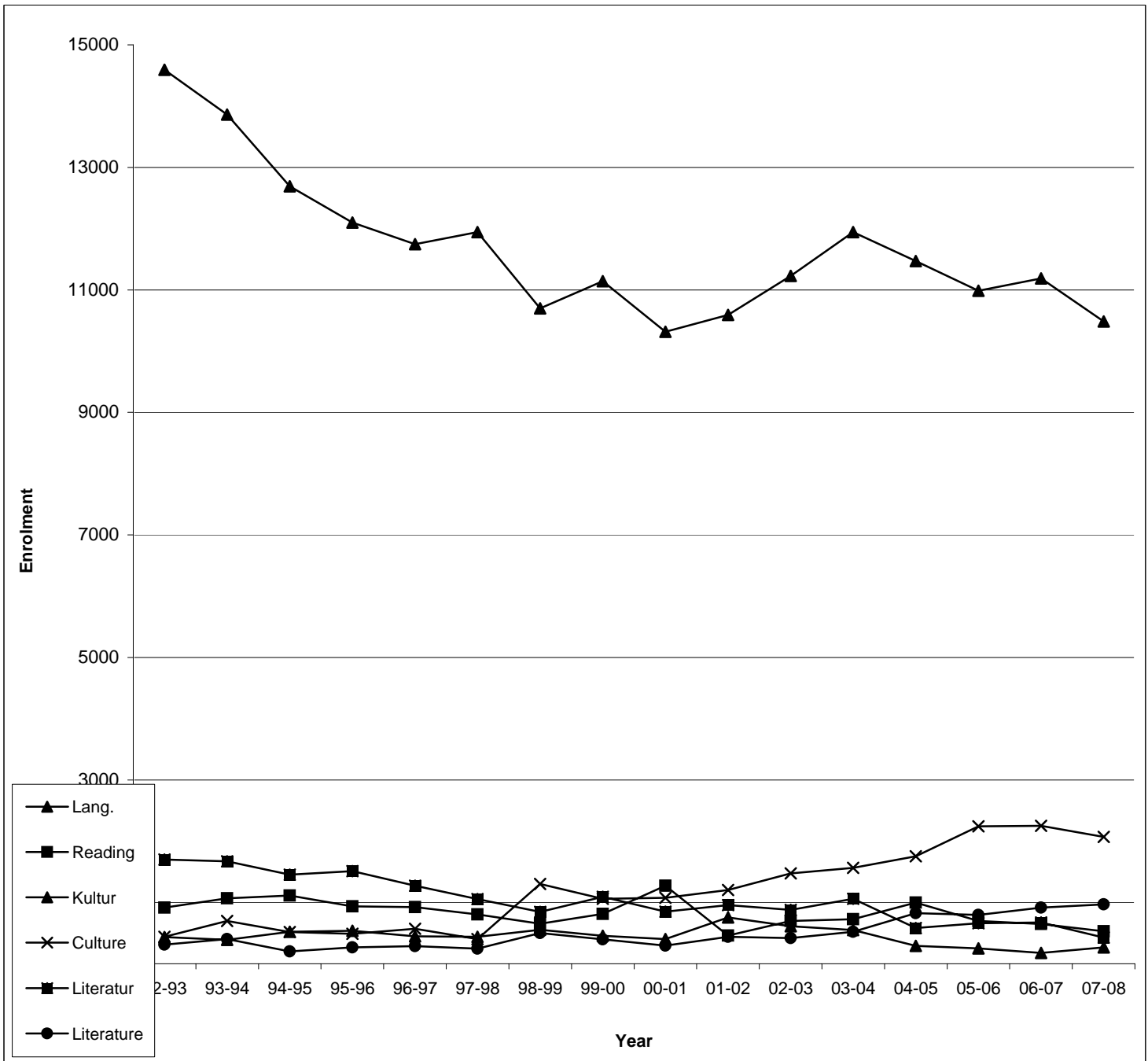
	Majors	Minors	Honours	Total	Degrees Awarded		
					BA	BAH	Total
Acadia	7	N/A	0	7	2	0	2
Alberta	30	49	3	82	5	2	7
UBC	14	24	1	39	14	1	15
Brock	0	10	0	10	0	0	0
Calgary	17	N/A	0	17	3	0	3
Concordia	1	70	0	71	5	0	5
Dalhousie	18	0	9	27	8	5	13
Guelph	0	17	0	17	0	0	0
Lethbridge	3	3	0	6	0	0	0
Manitoba	8	20	6	34	3	1	4
McGill	16	81	2	99	4	2	6
McMaster	0	2	3	5	0	3	3
Memorial	34	24	5	63	5	3	8
Montréal	48	10	0	58	8	0	8
Mount Allison	3	11	0	14	0	0	0
UNB	6	N/A	0	6	1	0	1
Ottawa	0	29	0	29	0	0	0
Queen's	8	18	0	26	3	3	6
Regina	12	8	0	20	0	0	0
Saint Mary's	9	8	0	17	4	0	4
Saskatchewan	4	N/A	N/A	4	1	0	1
U of T (Toronto)	56	112	23	191	6	4	10
UTMississauga	11	26	0	37	7	0	7
Trent	20	10	0	30	2	7	9
Victoria	13	7	4	24	9	2	11
Waterloo	16	10	17	43	1	7	8
W. Ontario	7	17	2	26	2	0	2
W. Laurier	N/A	N/A	1	1	0	2	2
Windsor	20	0	0	20	0	5	5
Winnipeg	7	0	0	7	2	0	2
York	0	3	17	20	0	1	1
<b>Totals</b>	<b>388</b>	<b>569</b>	<b>93</b>	<b>1050</b>	<b>95</b>	<b>48</b>	<b>143</b>

In 2007-2008, 31 Universities had a total of 1050 undergraduate program enrolments and 143 undergraduate degrees awarded. Comparing the same 31 universities reporting in the last two years, this represents an increase of 25 undergraduate degrees awarded.

Table 16

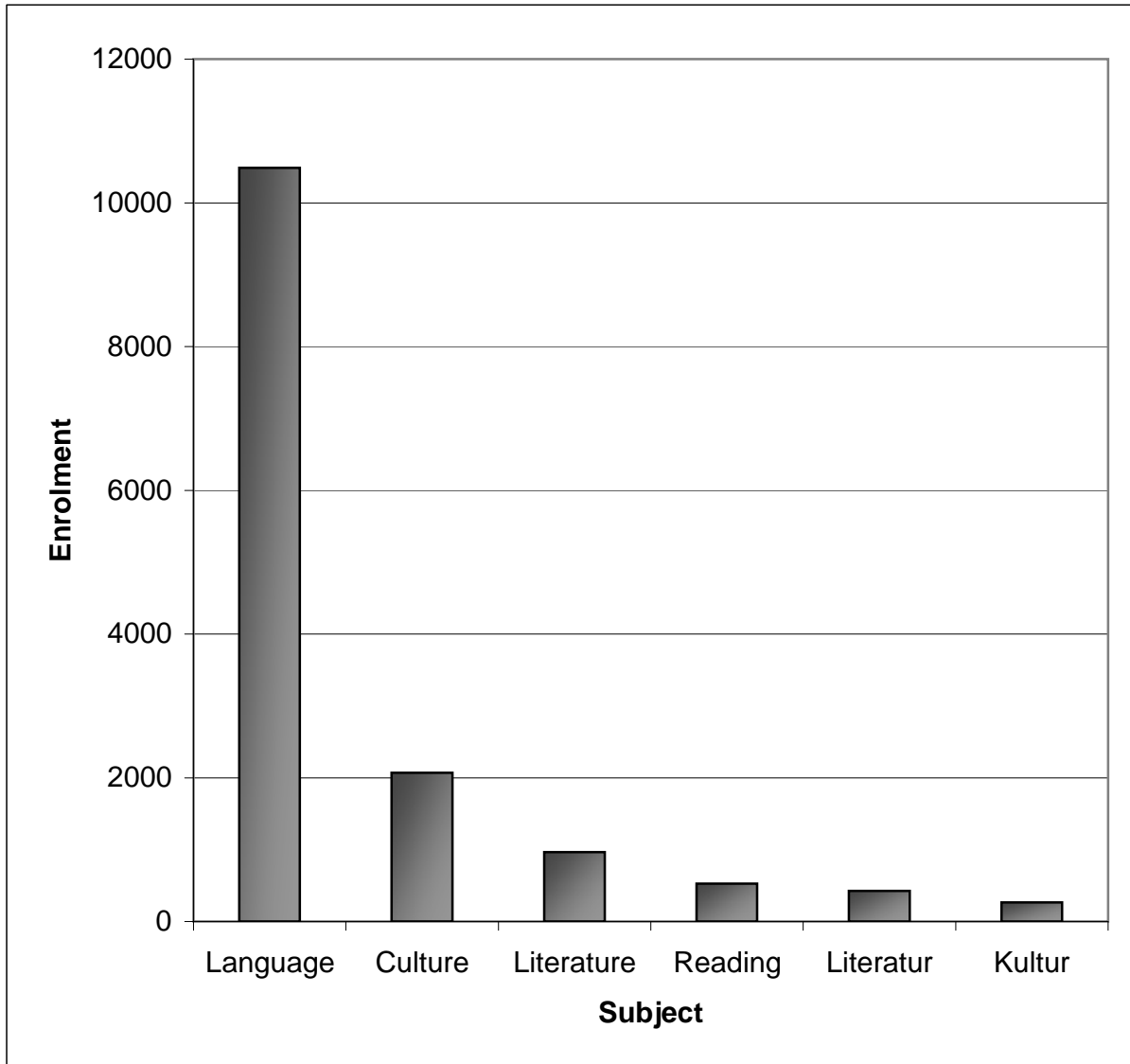
**Comparison of Enrolments in Language, Reading, Culture Taught in German (Kultur), Culture Taught in Translation (Culture), Literature Taught in German (Literatur), and Literature Taught in Translation (Literature) Courses from 1992-2008**

	92-93	93-94	94-95	95-96	96-97	97-98	98-99	99-00	00-01	01-02	02-03	03-04	04-05	05-06	06-07	07-08
Lang.	14595	13862	12691	12100	11745	11943	10700	11142	10316	10593	11228	11941	11469	10985	11186	10486
Reading	914	1065	1110	937	923	802	650	811	1272	457	698	725	995	696	648	527
Kultur	435	387	522	536	448	439	554	456	403	756	612	551	291	250	176	267
Culture	438	696	518	488	568	401	1302	1059	1075	1202	1474	1563	1752	2240	2250	2068
Literatur	1701	1672	1453	1510	1271	1054	843	1091	847	955	878	1059	582	658	673	424
Literature	312	402	199	267	286	247	498	399	293	439	419	519	825	794	914	967



**Table 17**  
**Comparison of Enrolments in Language, Reading, Culture Taught in German (Kultur), Culture Taught in Translation (Culture), Literature Taught in German (Literatur), and Literature Taught in Translation (Literature) Courses in 2007-2008**

	<b>2007-08</b>
Language	10486
Culture	2068
Literature	967
Reading	527
Literatur	424
Kultur	267



**Table 18**  
**Normal Annual Full Teaching Load For Tenured**  
**Faculty for 34 Universities**

	<b>University</b>	
1	Acadia	5
2	Alberta	4
3	Bishop's	6
4	UBC	5
5	Brock	4
6	Calgary	4
7	Carleton	4
8	Concordia	4
9	Dalhousie	6
10	Guelph	5
11	Lethbridge	5
12	Manitoba	5
13	McGill	4
14	McMaster	5
15	Memorial	5
16	Montreal	4
17	Mount Allison	6
18	UNB	5
19	Ottawa	5
20	UQAM	6
21	Queen's	4
22	Regina	5
23	Saint Mary's	5
24	Sask.	5
25	Simon Fr.	4
26	Toronto	5
27	Trent	6
28	Victoria	5
29	Waterloo	5
30	W. Ontario	5
31	W. Laurier	5
32	Windsor	5
33	Winnipeg	6
34	York	6
	<i>Average</i>	<b>4.9</b>

**Table 19**  
**Faculty Complement and Number of Courses Taught by Tenured/  
 Tenure Stream (T / TS), Full-time Contractuals and Other Full-time  
 Appointments (FTC / O), and Sessionals or Other Part-timers (Ses. / O)**  
**and Graduate Students at 36 Universities**

University	T / TS Faculty	Col. 1	Col. 2	Col. 3	Col. 4	Total Courses Taught	% Taught by T / TS (Col. 1)	% Taught by F-T (Col. 1-2)	% Taught by P-T (Col. 3-4)	% Taught by Grad. (Col. 4)
		Full- time		Part- time						
		Courses by T / TS	Courses by FTC / O	Courses by Ses. / O	Courses by Grad.					
1 Acadia	3	12	7	4	0	23	52%	83%	17%	0%
2 Alberta	5	10	40	1	10	61	16%	82%	18%	16%
3 Augustana	1	6	0	8	0	14	43%	43%	57%	0%
4 Bishop's	1	0	6	5	0	11	0%	55%	45%	0%
5 UBC	10	34	15	56	7	112	30%	44%	56%	6%
6 Brock	1	7	2	2	0	11	64%	82%	18%	0%
7 Calgary	4	10	14	6	0	30	33%	80%	20%	0%
8 Carleton	1	0	4	6	0	10	0%	40%	60%	0%
9 Concordia	1	3	5	15	0	23	13%	35%	65%	0%
10 Dalhousie	3	12	13	8	6	39	31%	64%	36%	15%
11 Guelph	2	7	5	2	0	14	50%	86%	14%	0%
12 Lethbridge	1	4	0	4	0	8	50%	50%	50%	0%
13 Manitoba	3	7	6	7	0	20	35%	65%	35%	0%
14 McGill	5	11	0	3	23	37	30%	30%	70%	62%
15 McMaster	2	3	12	1	0	16	19%	94%	6%	0%
16 Memorial	5	26	0	8	0	34	76%	76%	24%	0%
17 Montreal	4	15	10	17	6	48	31%	52%	48%	13%
18 Mt. Allison	1	3	11	0	0	14	21%	100%	0%	0%
19 UNB	2	8	0	7	0	15	53%	53%	47%	0%
20 Ottawa	2	7	0	14	0	21	33%	33%	67%	0%
21 UQAM	2	10	0	11	0	21	48%	48%	52%	0%
22 Queen's	6	10	8	10	13	41	24%	44%	56%	32%
23 Regina	3	15	0	6	0	21	71%	71%	29%	0%
24 SMU	1	4	0	4	0	8	50%	50%	50%	0%
25 Sask.	1	5	0	6	0	11	45%	45%	55%	0%
26 Simon Fr.	0	0	6	6	3	15	0%	40%	60%	20%
27 U of T	9	15	2	24	11	52	29%	33%	67%	21%
28 UTM	1	3	0	14	0	17	18%	18%	82%	0%
29 Trent	2	10	2	0	0	12	83%	100%	0%	0%
30 Victoria	3	11	8	9	1	29	38%	66%	34%	3%
31 Waterloo	7	27	0	15	11	53	51%	51%	49%	21%
32 W. Ontario	3	5	17	2	2	26	19%	85%	15%	8%
33 W. Laurier	0.5	1	0	10	0	11	9%	9%	91%	0%
34 Windsor	2.5	6	0	8	0	14	43%	43%	57%	0%
35 Winnipeg	1	1	1	9	0	11	9%	18%	82%	0%
36 York	5	16	0	12	0	28	57%	57%	43%	0%
<i>Totals</i>	104	324	194	320	93	931				
<i>Averages</i>	2.9	9.0	5.4	8.9	2.6	25.9	35.5%	56.2%	43.8%	6.0%